



Technical Information Package

Revised: January 5, 2024

Production Manager

Shane Huebner
shuebner@vvf.org
(970) 748-6649

Box Office:

(970) 845-8497
Toll-Free: (888) 920-2787
Fax: (970) 748-1396

Technical Director

Cheyenne Mendoza
cmendoza@vvf.org
(719)-839-0226

For all venue contacts please follow this [direct link](#)
Click on "Our Team" and then "Vilar Performing Arts Center"

Shipping Address

(Use for all freight carriers, e.g. UPS/FedEx)
68 Avondale Lane
Avon, CO 81620

Mailing Address

(USPS only)
P.O. Box 3822
Avon, CO 81620-3822

Contents

[Travel Directions](#)

[Parking and Loading Dock](#)

[Building Specifications](#)

[Stage & Carpentry](#)

[Film & Projection](#)

[Lighting](#)

[Audio](#)

[Props](#)

[Green Room, Dressing Rooms, Wardrobe](#)

[Appendix A: Emergency & Medical Information](#)

[Appendix B: Local Services](#)

[Appendix C: High Altitude Information](#)

[Appendix D: Hypobaric Chamber Information](#)

[Freight Elevator Information](#)

[Theatre Plan View](#)

[Repertory Plot](#)

Travel Directions

These directions are for reference only. Please coordinate all arrival and parking with [Production Manager](#). Beaver Creek is a gated mountain community requiring advance vehicle coordination.

From the East (Denver) or West (Utah):

From Interstate 70, Exit 167 (Avon). Take south exit from roundabout to go south on Avon Road. Continue south on Avon Road through three more roundabouts to the Beaver Creek main gate. Follow Village Road uphill for 2 miles as you pass a golf course. Take the second left after passing under a ski chairlift on to Avondale Lane. The Vilar Center is two blocks down on your right.

Link to Google map: <http://goo.gl/maps/ldY4j>

Parking and Loading Dock

Limited *paid* public parking (free in summer months) is located directly across from the Vilar Center in the Villa Montane Parking Garage. Max vehicle clearance 7'-2". More information available at the Beaver Creek Main Gate, (970) 949-4911.

Semi-Trucks are permitted into Beaver Creek one at a time. Trucks will unload at theatre and park in a lot 1.5 miles from the theatre. All truck movements are coordinated by our Production Manager. Loading area overhead clearance is 14'-3".

* Please call or [email](#) in advance for truck route, truck staging, and to arrange a guide-vehicle per resort regulations.

Tour bus parking with shore power is permitted on site with advance coordination with Facilities Manager. Two busses max, with no trailers. One bus with a Trailer. Overhead clearance for bus parking on site is 13'-3".

Enclosed loading ramp (no dock) is immediately to the left of the theatre main entrance. Loading path is a 9'-6" W by 12' H covered loading passage ending in a freight elevator.

The freight elevator is 8'-8" W by 10'-6" L by 8' H. Door dimensions 5'-11" W x 8' H. Freight elevator accesses kitchen/laundry level and dressing room/stage level. 9,400 pound capacity. Detailed specifications in [Appendix E](#). Items too long for the elevator, that can safely be flown, can be passed through both doors and loaded down to stage via two 2-ton motors on a trolley system.

Building Specifications

Seating

530 seats: ~429 in the orchestra, ~101 in the balcony. 18 seats may be removed for handicapped access. 2 rows of footlight seating may be added in the orchestra pit with advance approval.

Policies

House opens 30 minutes prior to advertised show start. Lobby opens 60 minutes prior to advertised show start. The entire Vilar Center, including the loading dock, is a

smoke-free environment. Executive director or deemed representative will make a pre-curtain announcement at show time, approximately 5 minutes in length.

Internet

Wireless: 802.11 AC is available in the building. Access information will be provided on arrival.

Wired: one Ethernet run may be made with advance notice to green room or a dressing room.

Cellular Service

Venue is underground and cell service is unavailable unless outside in the loading dock/lobbies. Venue phone will be provided for use on request. Venue phone only available in Green Room. Wifi calling available.

ADA Access

Available to all lobby, auditorium, stage right, stage left and all other spaces via elevators and/or wheelchair lift. Please inquire for specific routes.

Assisted Listening

Ten (10) Sennheiser 830s IR audio enhancement devices held in box office.

Crews

Professional, non-union staff. Production Manager or designated representative must be present for all operations on stage. Other required department heads determined by PM in advance. Additional crew shift/break requirements in accordance with Colorado state law and company policy: 15 minute by the end of 2.5hrs, 1 hour walk away meal break for shifts longer than 5 hours. Overhire available, please advance.

Stage & Carpentry

Email [Production Manager](#) for link to all current technical documentation; lineset schedules, light plots, frequency lists.

Stage Dimensions

Plaster Line "PL" is denoted as seam between removable stage apron and sprung flooring. Intersection between this seam and center line is the (0,0) origin point of all measurements.

Proscenium is 45' wide by 25'-4" high.

PL to back wall: 36'

PL to crossover: 34'

PL to Main Curtain: 1'6"

PL to first usable lineset: 2'6"

PL to last usable line set: 32'-8" see current lineset schedule for additional lineset spacings.

Curved apron/orchestra pit cover is 45' wide with a depth from the Plaster Line of 9' at the center and 4'-9" at the sides. Stage deck to auditorium floor is 3'-4".

Stage Floor

Black composite flooring, no traps. Sprung floor on sleepers with neoprene pads.

Wings

Centerline to stage right fly rail is 79'. There is a 6' by 10' piano storage area in the SR wing which is not removable. There is a storage area along the left wall which is not removable. Centerline to storage area is 43'-5"

Orchestra Pit

Located Downstage of PL, curved orchestra pit/apron. At CL adds 9' of play area, at proscenium opening adds 4'9" of play area. The apron is modular and has 3 main configurations:

- **Closed:** Apron is level with top of the stage. Adds additional play area.
- **Open - Dance/Orchestra:** Center 28' of apron is removed revealing orchestra pit 5' below stage level. Can be used for a small pit orchestra or as a dance floor.
- **Open – Seated:** Full 45' width of apron is removed to reveal 28' wide orchestra pit in the center with 8'6" wide 'wings' 3'5" below stage level flanking both sides of pit. 45 footlight seats are added.

Rigging

We are a short-fly house. There is no grid above the stage, instead 31 working linesets are underslung from I-beams, (bottom of I-beams is 34'-11".) Seven I-beams run upstage-downstage and are 10'-9" on center. (The center beam is on center line.) There is no access above these beams. All rigging is done with genies and beam clamps. Most rigging requires a prehang day.

Battens are 69' long, 1½" nominal steel pipe. In trim is 5', **max-out trim is 31'-6"**. Email [Production Manager](#) for current Lineset Schedule and details.

Single-Purchase rope system. First electric (LS2) is operated via an electronic winch. Operator rail is located stage right at stage level. Loading gallery stage right, 26'-6" above stage floor. Accessed by enclosed ladder or loading dock door.

Available Weight: 700 x 35lb. bricks (24,500lbs)

Crossover

24" wide and lit, upstage of dead-hung full-stage black drape.

Stage Manager's Console

Backstage right near loading dock elevator and green room/dressing rooms. Audio monitor and production comm are available. Page mic available. Communication with House Manager via two-way radios.

Shop Area

None. We stock only the most basic assortment of tools for repairs or adjustments to scenic elements. The closest substantial hardware/materials resource is Home Depot located 4 miles away. Specialized theatrical rentals, equipment and supplies are only available by mail-order.

Additional Equipment

- 36' Genie™ Personnel Lift
- 18' Scaffold unit
- Pallet Jack
- A-Frame and extension ladders, various heights

House Draperies

- Main Curtain: Reddish-brown with gold trim. On traveler track at plaster line. Manually operated stage right.
- Borders: Five (5). Flat, black velour. 8' H x 70' W.
- Legs: Two (2) sets of two. Flat, black velour. 25'-9" H x 16'-6" W.
- Full-Stage Travelers (used as legs 2 and 4): Two (2). Pleated, black velour. 26' H.
- Black Shark tooth Scrim with bottom chain. 30' H x 60' W.
- White Cyclorama, seamless bleached muslin with bottom pipe. 28'-6" H x 68' W.
- White Leno Bounce

Projection, Film, and Streaming

Projector and Surface *(New for 2024 season)*

- Projector: Christie M4k25 – 25,300 Lumen, 4K UHD, 3DLP RGB Laser Projector. Projector meets Rec. 2020 color gamut along with exceeding DCI P3 and Rec. 709 color requirements. Can support content up to 3840 x 2160 at 120hz.
- Lenses:
 - Long Throw Zoom Lens: Christie ILS1 2.6-4.1:1
 - Short Throw Fixed Lens: Christie ILS1 0.67:1 (Minimum distance to screen 16')
- Screen: Draper Custom Stagescreen – 16:9, 26'8" x 15'
 - Front and Rear Projection viewing surfaces available
 - Screen allows for flown configurations ONLY. Cannot be ground supported
- Playback: Apple M3 Max 14" Macbook Pro. Equipped with Qlab 5 and ProPresenter. Machine can reliably play back multiple 4K UHD streams simultaneously in H.264, H.265, ProRes 422 and ProRes 444 formats. Digital delivery of content is strongly preferred over physical media.
- Signal Distribution: Full 12G SDI and Cat6 cable distribution between Projection Booth, FoH and Backstage Right allowing for full control of projector and content from any of the mentioned locations.

Video Capture and Streaming

Venue has a professional-grade recording and streaming setup available, capable of capturing and recording a live-mixed performance. Isolated recordings from each camera not possible. Limited video editing services may be available for an additional charge, inquire with [Production Manager](#).

- | | |
|---|--|
| 1 | Black Magic Design ATEM Television Studio Pro HD |
| 2 | Black Magic Hyperdeck Studio Mini |
| 1 | Blackmagic Video Assist 4k |
| 1 | Blackmagic Smartview Duo 4k |
| 1 | Blackmagic Micro Studio Camera |
| 3 | Sony BRC-H800 Robo Cams |
| 1 | Sony RM-IP500 Robo CCU |
| 2 | Marshall CV355-10X 2.1MP |
| 1 | Marshall CV Pan/Tilt head |
| 1 | Marshall Multi-CCU |

Various Format and Standards converters available

Lighting

Please email [Production Manager](#) for a link to current Vectorworks and PDF Rep Plot.
Some drawings at end of this document for [reference](#).

Console

- ETC Ion 6000 w/ (2) Touchscreen Displays and 2x20 & 2x10 fader wings

Dimmers

- 380 ETC Sensor, 2.4 kW.

Houselights

- Operated from preset stations at FoH Booth and Stage Manager's Console or programmable at light board via dimmers. House manager can take emergency control of the house lights via a key switch in both the upper and lower lobbies.

Repertory Lighting Instruments

Moving Lights:

- 14 Martin Mac Quantum Profile
- 16 GLP Impression X5
- 8 Clay Paky A.leda B-EYE K10
- 6 Martin Mac 250 Entour
- 10 Varilite VL550D
- 15 Elation FuzePAR Z175

- 1 Le Maitre MVS water-based Hazer & Fan

Conventional Lights:

- | | | | |
|-----|-----------------------|----|---------------------------|
| 164 | ETC Source4 ERS | | |
| | Available Lens Tubes: | 12 | ETC Source4 PARNEL |
| | 5 10deg | 28 | ETC Source4 Zoom 15-30deg |
| | 62 19deg | 6 | PAR20 Mini Pars |
| | 68 26deg | | |
| | 84 36deg | 8 | Altman 6 Cell Ground Cyc |
| | 26 50deg | 10 | Altman 3 Cell Sky Cyc |
| | | 22 | Altman 6" Fresnel |
| 90 | ETC Source4 PAR | | |
| | Available Lenses | | |
| | 92 VNSP | | |
| | 64 NSP | | |
| | 112 MFL | | |
| | 92 WFL | | |
| | 6 XWFL | | |

Followspots

- 3 Lycian Starklite II 1200W. 7" color cuts. With Telrads and comm.

Lighting Accessories:

- 2 Rosco RevoPRO Dual Gobo Rotators
- 8 10' x 1½" boom pipes with 50 lb. bases

Various:

- A and B size Pattern Holders, steel and glass
- 7.5" Barn Door
- 10" Barn Door
- 5" Top Hat (6.25" frame)
- Source Four Iris
- 6.25" Donut
- 7.5" Donut

Notes

- All instruments and circuits are wired for 20A Stage Pin (2P&G). Adaptors and a variety of stage pin and DMX cable available. All instruments have gel frames and safety cables.

Audio

SPL Limit

VPAC has a strictly enforced DB limit of **95dB LAeq 10**. VPAC has worked to build a trust in the market as it pertains to this issue in our venue, and will not compromise our integrity to the patrons and the community, which loud shows have done in the past. VPAC provides SPL monitoring equipment at the FOH mix position as well as staff trained in its use. Our equipment measures a 10-minute A-Weighted average allowing for the natural fluctuation of a performance. A drum shield and amplifier baffles are available as needed.

SPL Monitoring

- 1 10Eazy Class 1 SPL Microphone System
- 1 2022 Apple M2 13" MacBook Air Running Smaart SPL

SPL monitoring system is fully IEC61672 Class 1 Compliant. SPL metrics remain in clear view of the mixing engineer at all times.

Upon the start of the show, end of intermission or end of a set break between bands, house engineer will reset all SPL metrics and begin logging SPL data inside of Smaart SPL. LAeq 10 measurements become enforceable only after 10 minutes of program material has elapsed. Any disputes regarding a limit violation will be settled by referencing the SPL log.

FOH Speakers

- 24 L'Acoustics Kara II (12 Per Side)
- 8 L'Acoustics SB18 (4 Per Side Flown)
- 6 L'Acoustics 5XT (Front Fill)
- 6 L'Acoustics X8 (Pit Fill)

- 1 L'Acoustics P1 (Located at FoH)
- 1 Laptop for LA Network Manager Control

Monitor Speakers

- 12 Meyer UM-1P
- 2 Meyer UM-100P
- 2 Meyer USM-100P
- 1 EAW Dual 15" Sub

IEM System

- 4 Sennheiser EK300 stereo IEM
 - 4 Sennheiser G4 stereo IEM
 - 1 Shure P4HW wired IEM
- *Venue does not own any IEM Earphones*

Audio Consoles

FOH

- DiGiCo SD12
- DiGiCo SD-Rack on redundant Optocore loop: Configured with 56 input channels and 32 output channels. All I/O cards are DiGiCo 32 bit.

Monitors

- DiGiCo SD9
- (2) DiGiCo D-Racks w/ MAD1 over ethercon for SD9 connectivity

Audio Snake

- Radial 2-Way 56 input Transformer Isolated Analog Split
- Various Shielded Cat6 Ethercon connections between stage and FoH

Mix Positions

- FOH at rear of orchestra seating, 69' from plaster line, just house left of center with unobstructed sightlines to the stage and both PA hangs. FoH dimensions included at the end of this document. **Please discuss touring audio control package in the advance process.**
- Monitor mix position is stage left at stage level.

Microphones

8	Shure SM-58	7	Sennheiser MD421-II
2	Shure SM-58S	6	Sennheiser e604
8	Shure SM-57	2	Sennheiser e609
2	Shure Beta 58A		
2	Shure Beta 57A	1	Audix D6
1	Shure Beta 56A		
2	Shure Beta 87A	2	AKG C414 B-ULS
6	Shure Beta 87C	5	AKG SE300B (Preamp)
2	Shure Beta 91	4	AKG CK91 (SDC for se300b)
1	Shure Beta 52A	5	AKG CK98 (shotgun for se300b)
2	Shure SM-81	5	AKG C535 EB
4	Shure KSM32	2	AKG-C418
4	Shure Beta98D/S	1	AKG-D112
		2	AKG-C3000
3	Neumann KMS 105		
2	Neumann KM 184	1	Audio-Technica AT871R
3	Neumann KMR-82i Shotguns	8	Audio-Technica AT8533X
4	DPA 4099 w/ various mounts	3	Crown PCC 160
1	Telefunken M81	1	Beyer M88
1	Telefunken M81-SH		
		1	Barcus Berry Piano Pickup

DI

4	Radial Pro DI	2	Radial JPC
2	Radial Pro D2	8	Countryman Type 85 FET Active
1	Radial J48 Active		
2	Radial J48 Stereo Active	1	Avalon U5
1	Radial Pro AV2		

Wireless Microphones

4	Shure Axient AD4Q
12	Shure Axient AD1 Beltpack Transmitters
12	Shure Axient AD2 Handheld Transmitters
2	Shure Axient AD3 "Plug-on" XLR Transmitters
12	Shure SM58 wireless handheld microphone capsules
6	Shure Beta 87c wireless handheld microphone capsules
4	Earthworks SR3117 wireless handheld microphone capsules
2	DPA 2028 wireless handheld microphone capsules
10	DPA 4660 Omni Lavalier
10	DPA 4466 Omni Headset
4	DPA 4080 Cardioid Lavalier
4	DPA 4088 Cardioid Headset
4	Shure MX153 Omni Headset

Mic Stands

20	Tall Boom, Tripod
22	Short Boom, Tripod
8	Straight, Round Base
2	Tall Boom, Heavy Duty
3	Straight, Tabletop

Paging System

- Fully digital 96k Dante System. POE speakers with individual volume control located in Greenroom, all 4 dressing rooms, dressing room hallway and back-stage right Stage Manager's position. All speakers are fed by program feed from main audio system. Paging microphones available as requested.

Production Communications

- Clear-Com. One channel party line.
 - Wired Stations available Stage Right, Stage Left, FoH Booth, Spot Booth
 - Wireless: 6 Hollyland Beltpacks w/ Headsets

Power

Company Switch

Lighting and motor power Stage Right: 120/208V, 3 phase, 400A/ leg
House lighting power on SR Platform: 120/208V, 3 phase, 400A/leg
Audio power Stage Left: 120/208V, 3 phase, 100A/leg

Props

Pianos

- 9' Steinway D Concert Grand (Mainstage)
- Steinway Studio Upright (Green Room)
- VPAC's May Gallery patron lounge often has a sponsored baby grand piano for the winter season. Contact Production Manager to find out if a piano is in the May Gallery and what type it is.

Orchestra Shell

5 20' tower sections, natural pine.

Chairs & Music Stands

30 Wenger black cushioned orchestra chairs
4 ea. Black Wood Stools (no back)
2 Adjustable height, low-back cello/bass stools
40 Black Manhasset stands
1 Conductor's stand
40 40W Clip Lights
8 Guitar Stands

Platforms

Wenger Versalite 3000 and 5000 Platform series with skirting and chair rails. Various Triangle/Trapezoidal additions for semi-circle arrangements.

10 8' x 4' sections
47 8" legs
75 16" legs
52 24" legs
2 Wenger Stair Sections with handrails (not available if pit is in dance configuration)
2 Custom built free standing stair units for 24" risers
2 Custom built free standing stair units for 16" risers
1 Wenger Double Conductors Podium.

Dance Floor

- Harlequin Cascade 32' x 52', must run SL↔SR
- Harlequin Black/Grey Reversible 33' x 49', must run SL↔SR
- 5 Dance Barres

Lecterns

- Light Wood Lectern

Green Room, Dressing Rooms, Wardrobe

Green Room – located at stage level

26'-6" x 16' room with sink, lounge area, and rehearsal piano. The Green Room is adjacent to the dressing rooms and is 15' from stage right wings. There is a video monitor with audio feed of stage.

Dressing Rooms – located at stage level

- Chorus Room: 18'-3 x 11'-10", 9 mirror spaces.
- Chorus Room: 11'-4 x 11'-3", 9 mirror spaces.
- Star Room: 10'-5" x 8'-4", 2 mirror spaces.
- Star Room: 11'-2" x 9'-2", 3 mirror spaces.

All dressing rooms are on stage level. The farthest star dressing room is 74' from backstage. All include tables, mirrors, make-up lighting, clothes racks, a sink, toilet, shower, and towels. The two larger dressing rooms are equipped with handicap-accessible restrooms/showers.

Wardrobe Facilities – no dedicated space, share with kitchen or use available dressing room area.

- Frigidaire Heavy Duty Extra Capacity Washer and Dryer on site
- Iron and Ironing Board (1)
- Steamer (2)
- Rolling clothes rack, 5' tall x 4' long x 20" wide (6)

**No same-day dry cleaning services available in town. None. At all.*

Appendix A: Emergency & Medical Information

ALL EMERGENCIES DIAL 911

Beaver Creek Security: (970) 949-4911 Headquartered in gatehouse at base of resort
Avon Fire Department: (970) 748-4050 (non-emergency)
Eagle County Sheriff: (970) 748-4040 (non-emergency)

Medical Services

Alpine Mobile Physicians – Open 24/7

On-call services

(970) 376-8376

Avon Urgent Care – Open 8 am – 8 pm, 7 days a week

50 Buck Creek Rd, Suite 100, Avon

(970)949-6100

Avon Chiropractic Life Center

150 E. Beaver Creek Blvd, #106-B, Avon

(970) 949-0444

Mountain Dental, Dr. David Wilson

82 E. Beaver Creek Blvd, #211, Avon

(970) 949-4433

Hyperbaric Oxygen Therapy – Open 8 am – 6 pm, M-F and by special appointment

Vail Integrative Medical

0105 Edwards Village Center, A203, Edwards

(970)926-4600

[link to more info](#)

Appendix B: Local Services

For Hire Transportation

Dial-A-Ride

On request free bus service within Beaver Creek resort only
(970) 949-1938

High Mountain Taxi

Fares from Aspen to East Vail
(970) 476-8294

Epic Mountain Express

Airport Service

Shared rides or premier point-to-point service
(970) 754-7433
<https://www.epicmountainexpress.com/>

Massage & Gym

Allegria Spa

Located in the Park Hyatt Beaver Creek, 2 blocks from theater
(970) 748-7500
www.allegriaspa.com

*Therapists for on-site sessions available on request

Groceries & Pharmacies

City Market & Pharmacy

72 Beaver Creek Place, Avon
(970) 949-5409

Beaver Creek Market & Deli

In Beaver Creek, 20 yards from theater
(970) 949-0742

Walmart & Pharmacy

255 West Main Street, Avon
(860) 409-0404

Walgreens & Pharmacy

15 Sun Road, Avon
(970) 949-4057

Laundry

Theater is equipped with a household size stackable washer & dryer.

*Avon/Edwards area has a few dry cleaners, but no same-day dry cleaning services are available in our area.

Post Office

Avon Post Office

111 W Beaver Creek Blvd, Avon
(970) 949-4057

Appendix C: High Altitude Information

The VPAC maintains two oxygen bottles with masks for backstage use which must be supervised by authorized personnel.

High Altitude Health Tips

From the Beaver Creek Medical Center

In the Vail/Beaver Creek area, there is 30% less oxygen and 50% less humidity than at sea level. Everyone is affected to some degree and the symptoms range from restlessness and shortness of breath, to coughing, to increased heart rate and headaches. Although it can be serious, it's easily avoidable.



What you can do:

Go easy! When you arrive in the mountains, it usually takes a day or two for your body to adjust. Don't overexert. Effects of exercise are more intense here. If you normally run 10 miles a day at home, you might try 6 miles here.

Hydrate! Drinking plenty of water is the number one way to help your body adjust easily to our higher altitude. The decreased humidity, along with the decreased oxygen makes dehydration a common health problem. You breathe faster, which causes the body to lose moisture more quickly. You'll need 40-50% more fluids per day than you would at sea level.

Monitor your alcohol intake! In our rarified air, golf balls go ten percent farther... and so do cocktails. Alcoholic drinks pack more of a wallop than at sea level. It is recommended that you go easy on the alcohol in the mountains, as its effects will feel stronger here.

Eat foods high in potassium! Foods such as broccoli, bananas, avocado, cantaloupe, celery, greens, bran, chocolate, granola, dates, dried fruit, potatoes and tomatoes will help you replenish electrolytes by balancing salt intake.

Plan for sun! We receive over 300 days of sunshine each year (more than San Diego or Miami). With less water vapor in the air at this altitude, the sky really is bluer in Colorado. But there's 25 percent less protection from the sun. You can get seriously burned in as little as 20 minutes if you're not using proper protection. Use sunglasses, sunscreen, and lip balm, even in winter.

Other High Altitude Issues:

Frostbite. The best cure is prevention but if you experience frostbite do not rub it. Slowly warm the affected area in lukewarm water. Call a physician, especially if the frostbite has affected a large area.

Nosebleeds. Increased activity and low humidity dry membranes in the nose, which may cause bleeding. You can prevent it by putting a touch of Vaseline in your nostrils each morning and night, and maintaining an increased fluid intake.

Appendix D: Hypobaric Chamber Information



Relief, Recovery, Rehabilitation – Results
vailhealth.com

VIMG is happy to announce an exciting new service for our patients and guests, hyperbaric oxygen therapy.

What is Hyperbaric Oxygen Therapy (HBOT)

Simply put, HBOT is a non-invasive therapeutic treatment that delivers oxygen to cells in the body. All living creatures require air, water, and food, and nothing is more vital than oxygen. It is possible to last weeks without food, a few days without water but only mere minutes without oxygen. HBOT involves breathing oxygen in a pressurized chamber in which the atmospheric pressure is raised up to three times higher than normal. Under these conditions, your lungs can gather up to three times more oxygen than would be possible breathing oxygen at normal air pressure. The body's tissues need an adequate supply of oxygen to function and when tissue is injured, it may require more oxygen to heal. "Hyperbaric oxygen therapy increases the amount of oxygen dissolved in your blood," says Nayan Patel a biomedical engineer in FDA's Anesthesiology Devices Branch. An increase in blood oxygen may improve oxygen delivery for vital tissue function to help fight infection or minimize injury.

Hyperbaric chambers, used in HBOT are any number of enclosures, which can be pressurized to allow a person inside to experience higher atmospheric pressures than the normal environmental pressures. For example, a treatment at an elevation of 12,000 feet above sea level using a 4 psi (1.27 ATA) can simulate a decent of ~5,843 feet to 6,157 feet above sea level. At higher elevations, the barometric pressure is lower. This decrease of pressure also decreases the oxygenation of blood, and is known as anoxia—where molecules of oxygen exert less pressure on the walls of the alveoli (Dalton's Law). HBOT follows this law.

How does Hyperbaric Oxygen Therapy (HBOT) work?

Hyperbaria - Increased atmospheric pressure as a means of increasing oxygen uptake without an enriched oxygen source

Hyperoxia - Increased total oxygen content

Hyperbaria is based on the concept of the relationship of gas pressure and uptake in liquids (blood, plasma and tissues). Henry's Law states that "a gas is dissolved by a liquid in direct proportion to its partial pressure." For example, at sea level, atmospheric pressure is 760 mm Hg, the oxygen concentration is 21% and the body's oxygen content or partial pressure, pO₂, in blood and plasma is ~ 40 mm Hg.

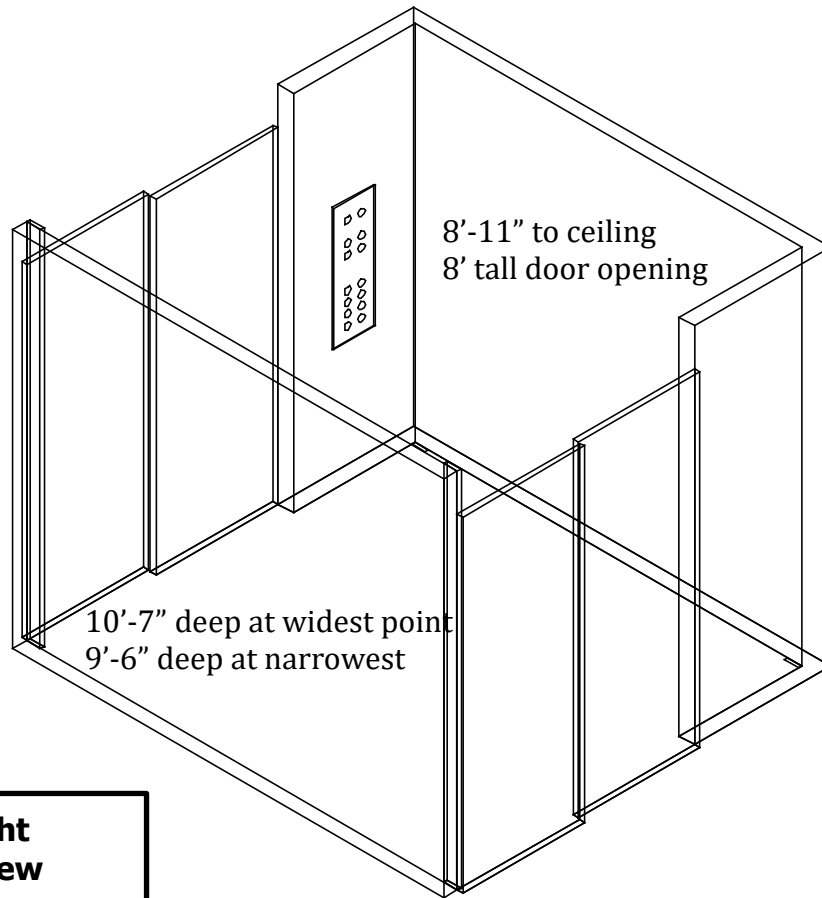
Red blood cells have a limitation as to how much oxygen can bind with hemoglobin. The plasma portion of the blood typically has about a 3% oxygen concentration. By placing someone in a 3 psi pressure hyperbaric environment, the increase in atmospheric pressure at sea level goes from 760 mm Hg to 915 mm Hg. This increase in gas pressure, increases the partial pressure of the oxygen

gas and thus forces more oxygen to be dissolved in the plasma. This saturation of oxygen in the blood that occurs due to the HBOT therapy, allows the extra oxygen to be diffused or transported to the surrounding body tissues. Thus, oxygen transport by plasma is significantly increased under this specialized treatment. At three atmospheres pressure, enough oxygen can be dissolved in the plasma to support the oxygen demands of the body at rest in the absence of hemoglobin!

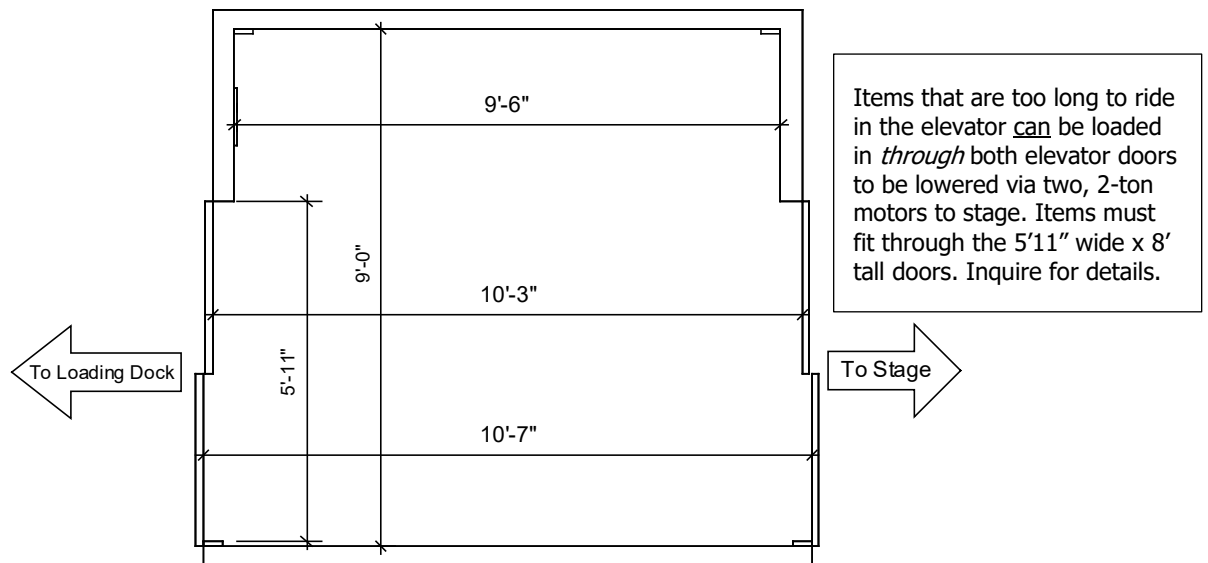
The FDA and Medicare have approved the use of Hyperbaric Oxygen Therapy for 13 conditions such as diabetic and other wound healing, anemia and compartment syndrome to name a few. In addition, current research shows that HBOT is a viable treatment for the growing list of “off-label” conditions. These include various disorders from brain injury, peripheral nerve issues, stroke and sports injuries to name a few. Of these ‘off label’ indications, there is growing research on the effectiveness of HBOT although they are not yet formally approved by the FDA. Hyperbaric chambers are medical devices that require FDA clearance. FDA clearance of a device for a specific use means FDA has reviewed valid scientific evidence supporting that use and determined that the device is at least as safe and effective as another legally U.S.-marketed device.

HBOT is very effective for acute mountain sickness. This is a common occurrence for guests to the Vail Valley when traveling from sea level. The initial symptoms of altitude sickness can include: Headache, lethargy, a drop in performance, lack of coordination, insomnia, appetite loss, dizziness, nausea and vomiting. A session in the hyperbaric chamber will simulate a decrease in altitude of approximately 7,000 feet.

Freight Elevator Information

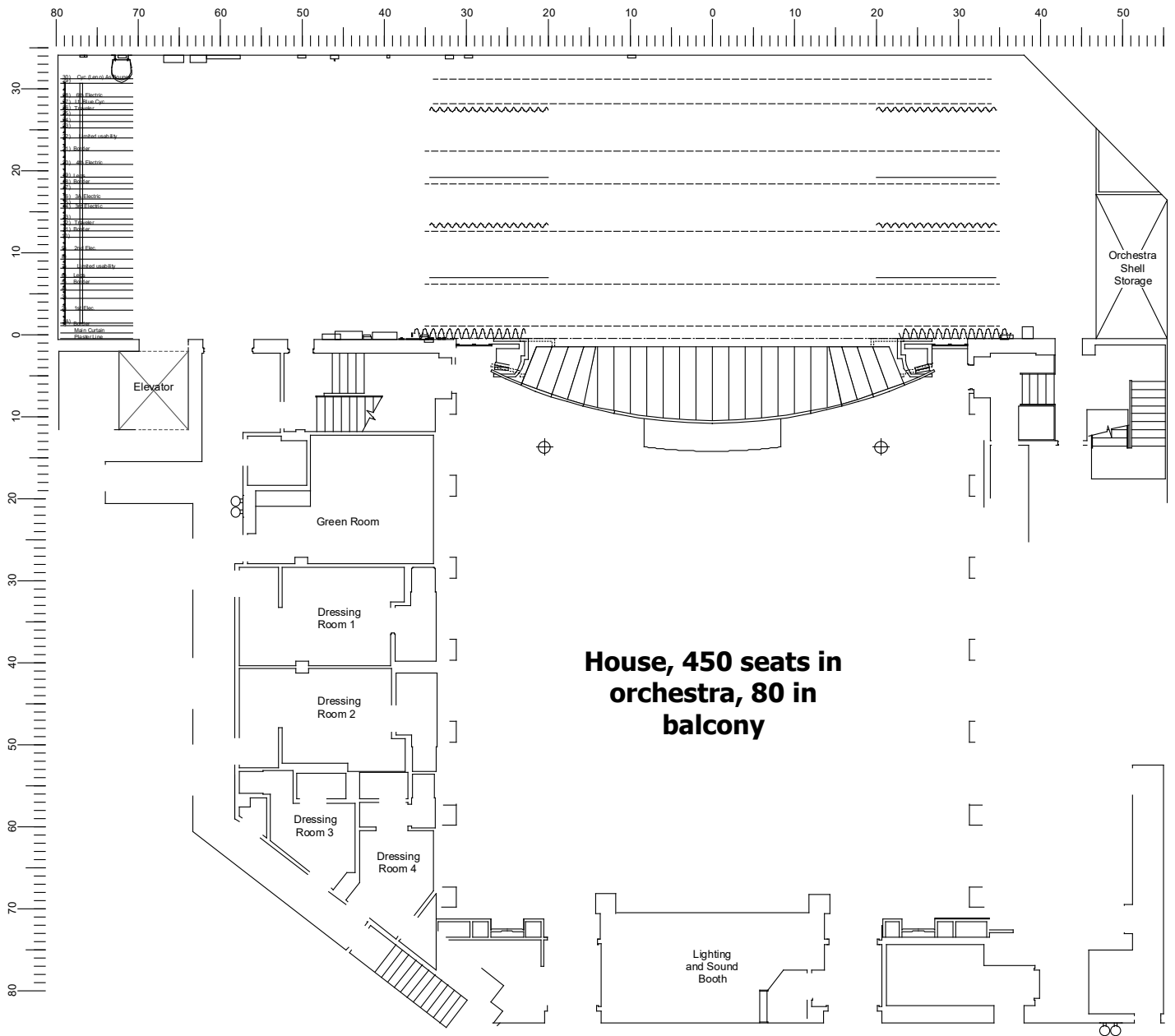


**Elevator Right
Isometric View**



Elevator Plan View

Theatre Plan View



**Doors exit to Lower Lobby: merch, concessions, restrooms.
Box Office/Street access are on upper level.**

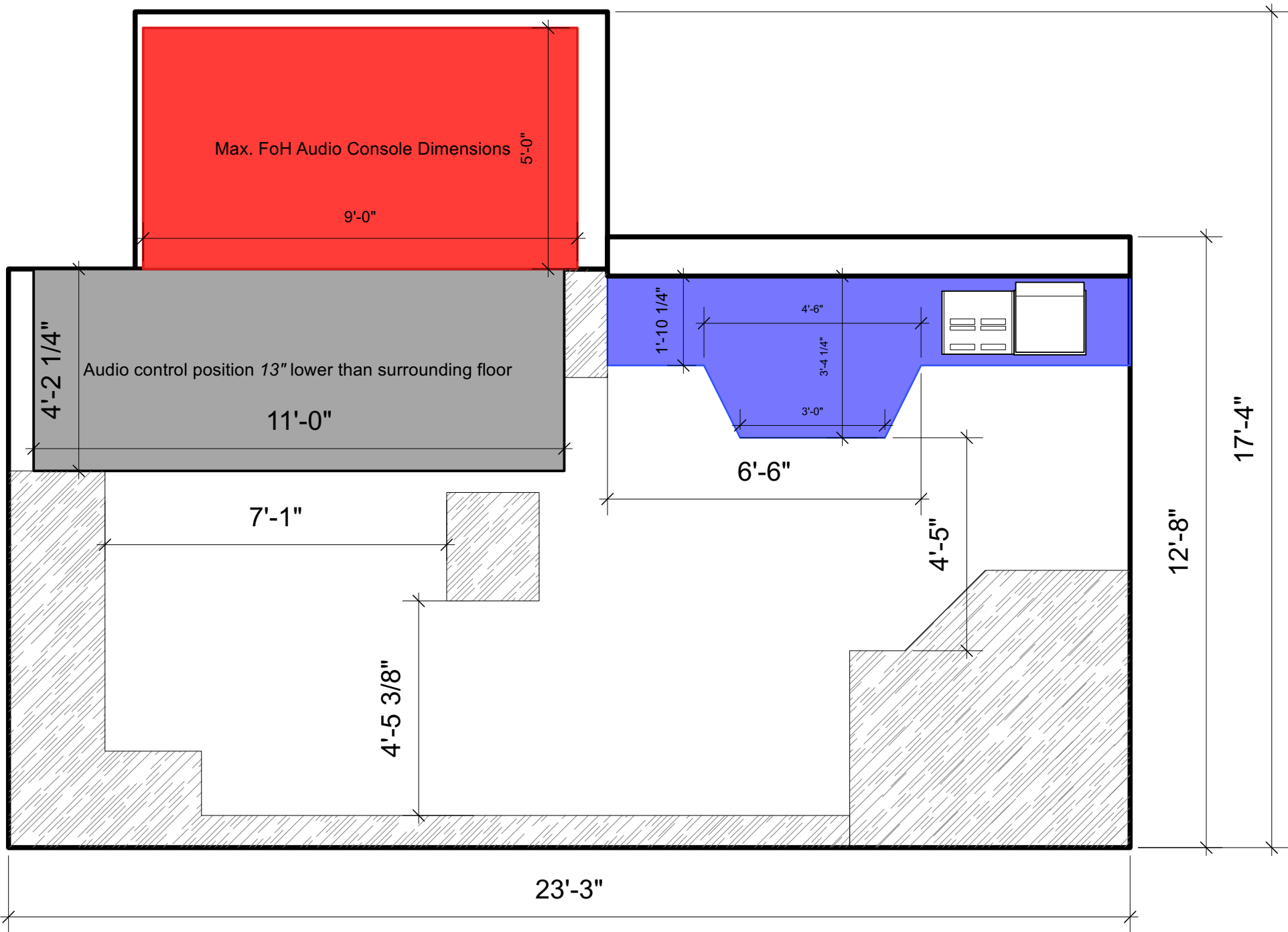
Theatre Plan View







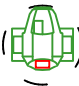





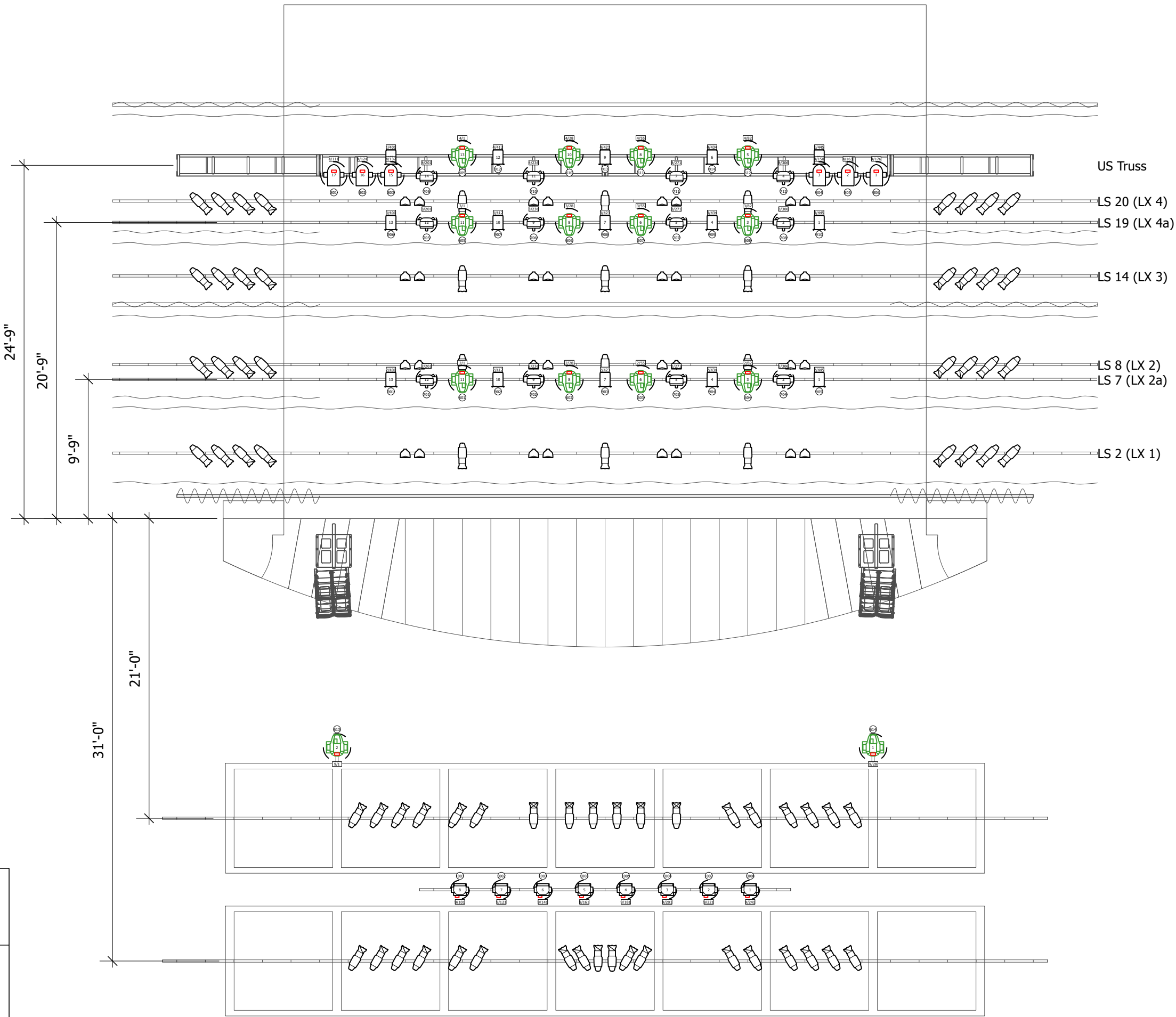






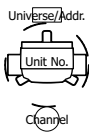
Symbol Key

	Clay Paky ALED A B EYE K10	8
	Varilite VL 550	6
	Elation Fuze Par Z175	15
	GLP Impression X5	12
	Martin Mac Quantum Profile	14
	ETC Source 4 PAR WFL	32
	ETC Source 4 36deg	28
	ETC Source 4 26deg	46



Project Title:
Vilar Performing Arts Center Lighting Plot

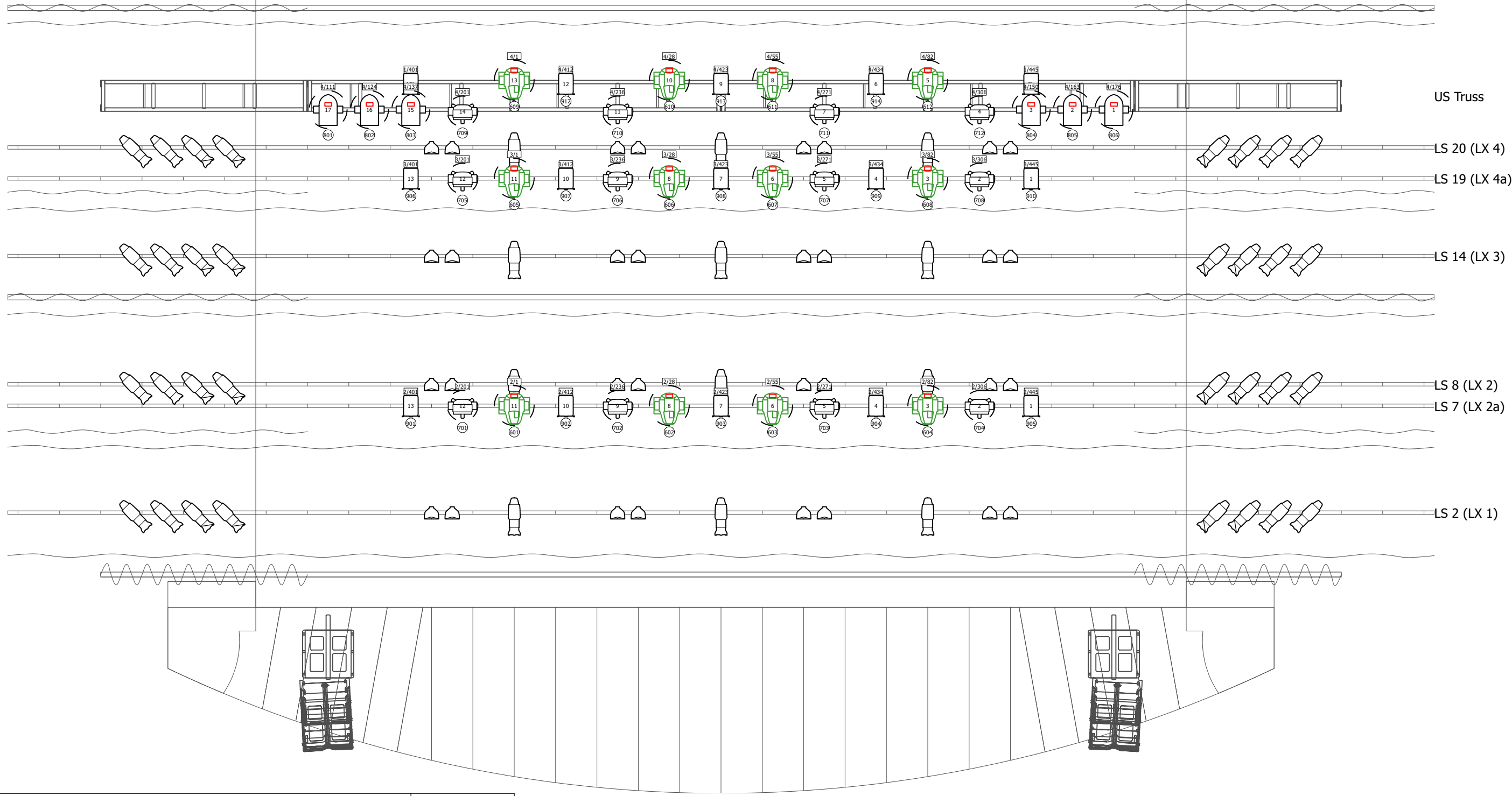
Revision Date:
Jan 9, 2024


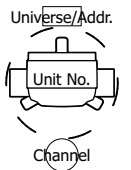


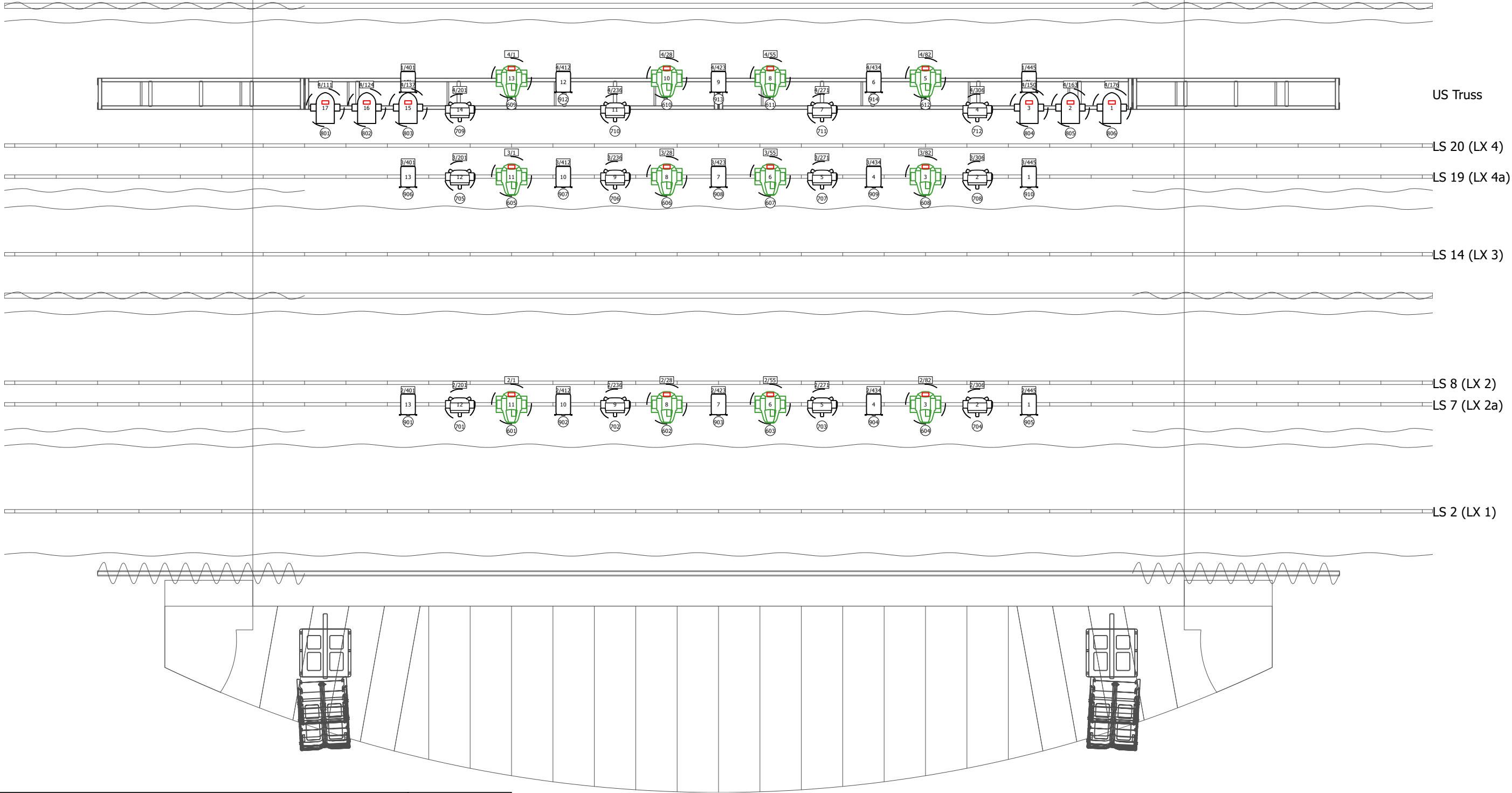
Sheet Number:
1



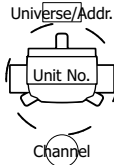
Sheet Title:
Plot Overview

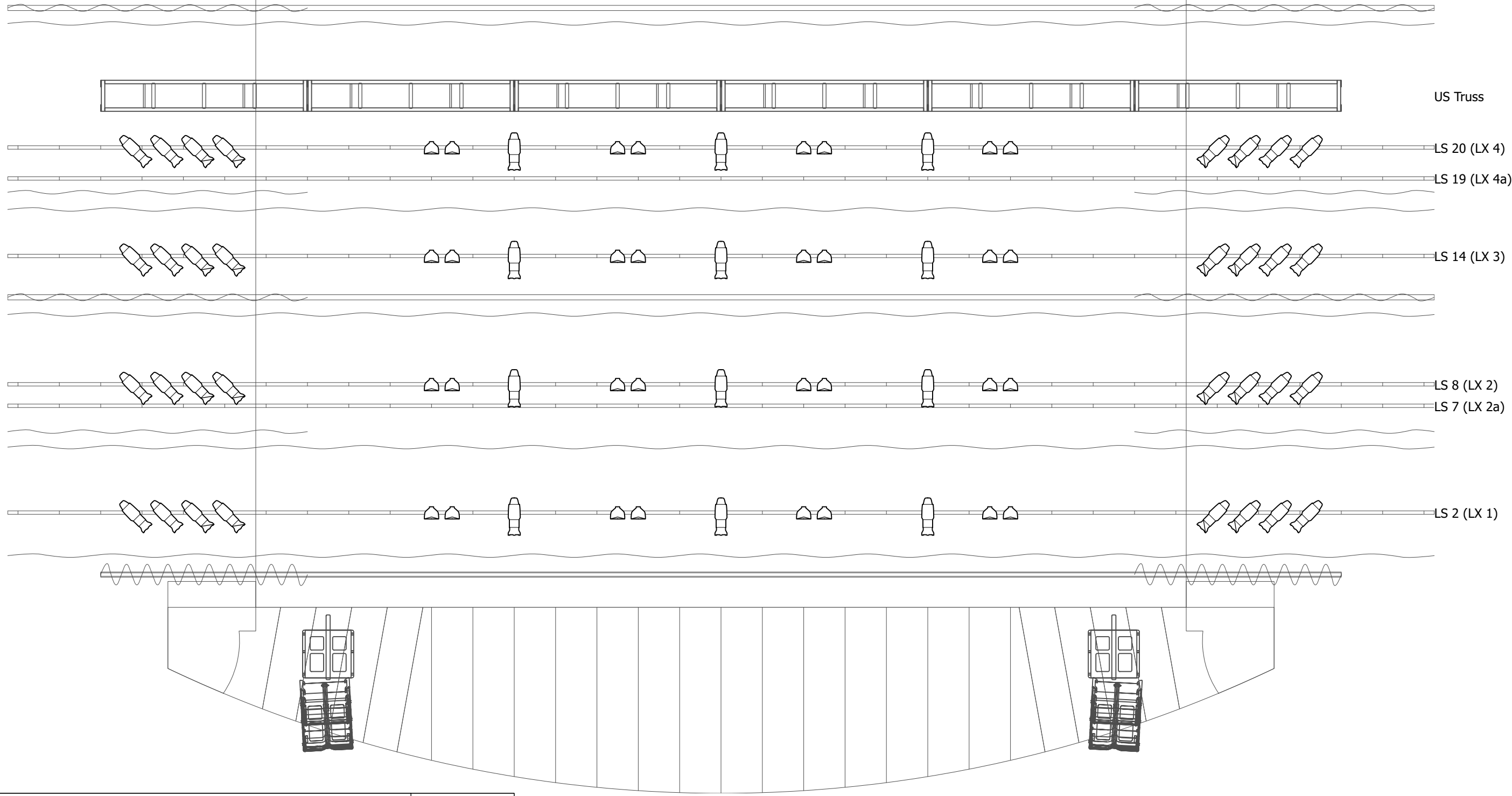
Drawn By:
Cheyenne Mendoza



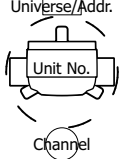


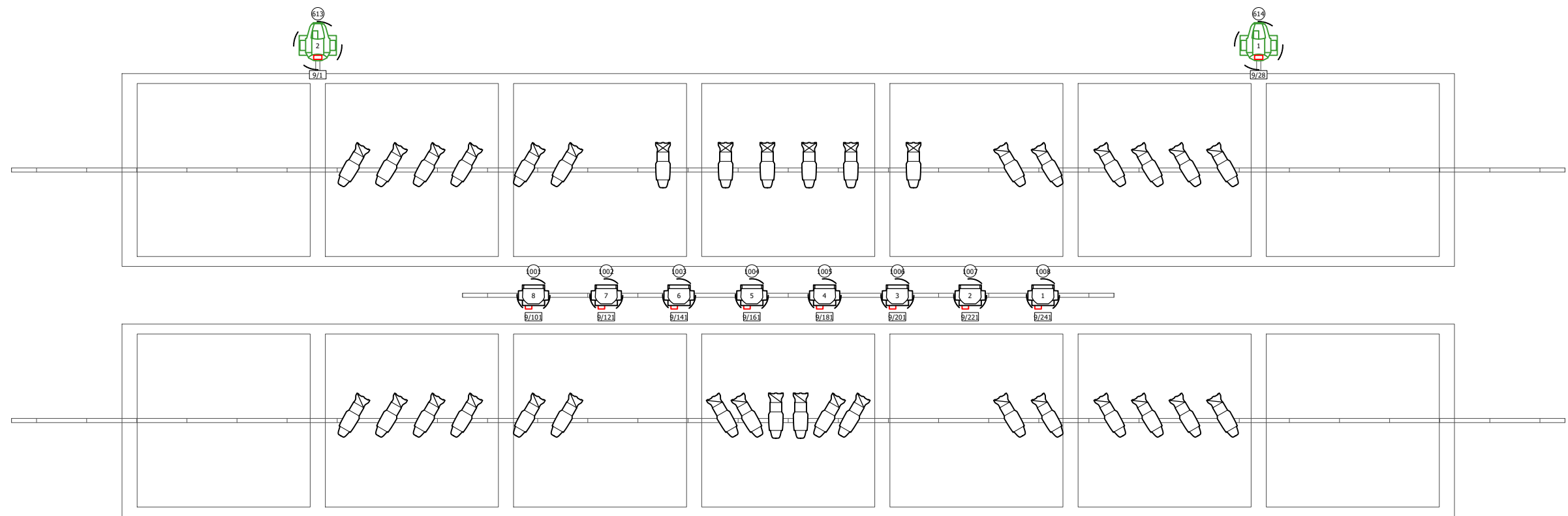
 <p>VILAR PERFORMING ARTS CENTER BEAVER CREEK <small>VAIL VALLEY FOUNDATION</small></p>	Project Title: Vilar Performing Arts Center Lighting Plot		
	Revision Date: Jan 9, 2024		
Sheet Number: 2		Sheet Title: Overstage Detail	
Drawn By: Cheyenne Mendoza			



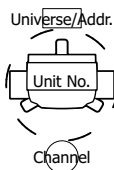


 VILAR PERFORMING ARTS CENTER BEAVER CREEK 	Project Title: Vilar Performing Arts Center Lighting Plot		
	Revision Date: Jan 9, 2024		
Sheet Number: 3	Sheet Title: Overstage Movers		
Drawn By: Cheyenne Mendoza			



 VILAR PERFORMING ARTS CENTER BEAVER CREEK 	Project Title: Vilar Performing Arts Center Lighting Plot		
	Revision Date: Jan 9, 2024		
Sheet Number: 4	Sheet Title: Overstage Conventional		
Drawn By: Cheyenne Mendoza			



 VILAR PERFORMING ARTS CENTER BEAVER CREEK 	Project Title: Vilar Performing Arts Center Lighting Plot		
	Revision Date: Jan 9, 2024		
Sheet Number: 5	Sheet Title: FoH Detail		
Drawn By: Cheyenne Mendoza			

VPAC Lighting Patch

Martin Mac Quantum Profile Extended - 27 Channel		
Unit #	Univ./Addr.	Location
601	2/1	LX 2A
602	2/28	LX 2A
603	2/55	LX 2A
604	2/82	LX 2A
605	3/1	LX 4A
606	3/28	LX 4A
607	3/55	LX 4A
608	3/82	LX 4A
609	4/1	US TRUSS
610	4/28	US TRUSS
611	4/55	US TRUSS
612	4/82	US TRUSS
613	9/1	FOH CATWALK
614	9/28	FOH CATWALK

Vari-Lite VL550D 16B - 13 Channel		
Unit #	Univ./Addr.	Location
801	4/111	US TRUSS
802	4/124	US TRUSS
803	4/137	US TRUSS
804	4/150	US TRUSS
805	4/163	US TRUSS
806	4/176	US TRUSS

Elation FuzePAR Z175 11ch 2 16B - 11 Channel		
Unit #	Univ./Addr.	Location
901	2/401	LX 2A
902	2/412	LX 2A
903	2/423	LX 2A
904	2/434	LX 2A
905	2/445	LX 2A
906	3/401	LX 4A
907	3/412	LX 4A
908	3/423	LX 4A
909	3/434	LX 4A
910	3/445	LX 4A
911	4/401	US TRUSS
912	4/412	US TRUSS
913	4/423	US TRUSS
914	4/434	US TRUSS
915	4/445	US TRUSS

GLP Impression X5 M2 RGBL - 35 Channel		
Unit #	Univ./Addr.	Location
701	2/201	LX 2A
702	2/236	LX 2A
703	2/271	LX 2A
704	2/306	LX 2A
705	3/201	LX 4A
706	3/236	LX 4A
707	3/271	LX 4A
708	3/306	LX 4A
709	4/201	US TRUSS
710	4/236	US TRUSS
711	4/271	US TRUSS
712	4/306	US TRUSS
713		
714		
715		
716		

Clay Paky B-Eye K10 Standard - 21 Channel		
Unit #	Univ./Addr.	Location
1001	9/101	FOH CATWALK
1002	9/122	FOH CATWALK
1003	9/143	FOH CATWALK
1004	9/164	FOH CATWALK
1005	9/185	FOH CATWALK
1006	9/206	FOH CATWALK
1007	9/227	FOH CATWALK
1008	9/248	FOH CATWALK

Martin Mac 250 Entour 16B Extended - 18 Channel		
Unit #	Univ./Addr.	Location
1101	5/1	GROUND PACKAGE
1102	5/19	GROUND PACKAGE
1103	5/37	GROUND PACKAGE
1104	5/55	GROUND PACKAGE
1105	5/73	GROUND PACKAGE
1106	5/91	GROUND PACKAGE

Le'Maitre MVS Hazer		
Unit #	Univ./Addr.	Location
420	1/512	