



**VILAR PERFORMING  
ARTS CENTER**  
BEAVER CREEK

# Technical Information Package

Revised: 1/18/23

## Production Manager

Shane Huebner  
[shuebner@vvf.org](mailto:shuebner@vvf.org)  
(970) 748-6649

## Box Office:

(970) 845-8497  
Toll-Free: (888) 920-2787  
Fax: (970) 748-1396

## Technical Director

Cheyenne Mendoza  
[cmendoza@vvf.org](mailto:cmendoza@vvf.org)

For all venue contacts please follow this [direct link](#)  
Click on "Our Team" and then "Vilar Performing Arts Center"

## Shipping Address

(Use for all freight carriers, e.g. UPS/FedEx)  
68 Avondale Lane  
Avon, CO 81620

## Mailing Address

(USPS only)  
P.O. Box 3822  
Avon, CO 81620-3822

## Contents

[Travel Directions](#)

[Parking and Loading Dock](#)

[Building Specifications](#)

[Stage & Carpentry](#)

[Film & Projection](#)

[Lighting](#)

[Audio](#)

[Props](#)

[Green Room, Dressing Rooms, Wardrobe](#)

[Appendix A: Emergency & Medical Information](#)

[Appendix B: Local Services](#)

[Appendix C: High Altitude Information](#)

[Appendix D: Hypobaric Chamber Information](#)

[Freight Elevator Information](#)

[Theatre Plan View](#)

[Repertory Plot – Onstage Fixtures](#)

[Repertory Plot – Front of House](#)

[Repertory Plot – Dance Towers](#)

## Travel Directions

These directions are for reference only. Please coordinate all arrival and parking with [Facilities Manager](#). Beaver Creek is a gated mountain community requiring advance vehicle coordination.

### **From the East (Denver) or West (Utah):**

From Interstate 70, Exit 167 (Avon). Take south exit from roundabout to go south on Avon Road. Continue south on Avon Road through three more roundabouts to the Beaver Creek main gate. Follow Village Road uphill for 2 miles as you pass a golf course. Take the second left after passing under a ski chairlift on to Avondale Lane. The Vilar Center is two blocks down on your right.

Link to Google map: <http://goo.gl/maps/ldY4j>

## Parking and Loading Dock

Limited *paid* public parking (free in summer months) is located directly across from the Vilar Center in the Villa Montane Parking Garage. Max vehicle clearance 7'-2". More information available at the Beaver Creek Main Gate, (970) 949-4911.

Semi-Trucks are permitted into Beaver Creek one at a time. Trucks will unload at theatre and park in a lot 1.5 miles from the theatre. All truck movements are coordinated by our Facilities Manager. Loading area overhead clearance is 14'-3".

\* Please call or [email](#) in advance for truck route, truck staging, and to arrange a guide-vehicle per resort regulations.

Tour bus parking with shore power is permitted on site with advance coordination with Facilities Manager. Two busses max, with no trailers. One bus with a Trailer. Overhead clearance for bus parking on site is 13'-3".

Enclosed loading dock is immediately to the left of the theatre main entrance. Loading path is a 9'-6" W by 12' H covered loading passage ending in a freight elevator. (No ramp up required.)

The freight elevator is 8'-8" W by 10'-6" L by 8' H. Door dimensions 5'-11" W x 8' H. Freight elevator accesses kitchen/laundry level and dressing room/stage level. 9,400 pound capacity. Detailed specifications in [Appendix E](#). Items too long for the elevator, that can safely be flown, can be passed through both doors and loaded down to stage via two 2-ton motors on a trolley system.

## Building Specifications

### **Policies**

House opens 30 minutes prior to curtain. Lobby opens 60 minutes prior to curtain. The entire Vilar Center, including the loading dock, is a smoke-free environment. Executive director or deemed representative will make a pre-curtain announcement at show time, approximately 5 minutes in length.

### **Internet**

Wireless: 802.11 AC is available in the building. Access information will be provided on arrival. Wired: one Ethernet run may be made with advance notice to green room or a dressing room.

## Cellular Service

Venue is underground and cell service is unavailable unless outside in the loading dock/lobbies. Venue phone will be provided for use on request. Venue phone only available in Green Room. Wifi calling available.

## ADA Access

Available to all lobby, auditorium, stage right, stage left and all other spaces via elevators and/or wheelchair lift. Please inquire for specific routes.

## Assisted Listening

Ten (10) Sennheiser 830s IR audio enhancement devices held in box office.

## Crews

Professional, non-union staff. Production Manager or designated representative must be present for all operations on stage. Other required department heads determined by PM in advance. Additional crew shift/break requirements in accordance with Colorado state law and company policy: 10 minute break every 2-3 hours, 1 hour meal break for shifts longer than 5 hours. Overhire available, please advance.

## Stage & Carpentry

Email [Production Manager](#) for link to all current technical documentation; lineset schedules, light plots, frequency lists.

## Seating

530 seats: ~429 in the orchestra, ~101 in the balcony. 18 seats may be removed for handicapped access. 2 rows of footlight seating may be added in the orchestra pit with advance approval.

## Stage Dimensions

Proscenium is 45' wide by 25'-4" high. Plaster Line to back wall is 34'. Plaster Line to crossover is 32'. The distance from the plaster line to the last usable line set is 31'-1", see current lineset schedule for specifics. The curved apron/orchestra pit cover is 45' wide with a depth from the Plaster Line of 10'-10" at the center and 7'-10" at the sides. Stage deck to auditorium floor is 3'-4".

## Stage Floor

Black composite flooring, no traps. Sprung floor on sleepers with neoprene pads.

## Wings

Centerline to stage right fly operator rail is 79'. There is a 6' by 10' piano storage area in the SR wing which is not removable. There is a storage area along the left wall which is not removable. Centerline to storage area is 43'-5"

## Orchestra Pit

The curved apron when orchestra pit is covered is 45' wide with a depth from the plaster line of 10' at the center and 8' at the sides. It is usually covered. When open at the lowest setting, the pit is 29'-5" wide at the proscenium line, 5' deep (from stage level), and 9' on center from upstage wall to downstage wall. In some configurations it is seated with up to 45 footlight seats or opened for a standing/dancing area.

## Over-Stage

**We are a short-fly house.** There is no grid above the stage, instead 31 working linesets are underslung from I-beams, (bottom of I-beams is 34'-11".) Seven I-beams run upstage-downstage and are 10'-9" on center. (The center beam is on center line.) There is no access above these beam. All rigging is done with genies and beam clamps. Any rigging requires a prehang day.

Battens are 69' long, 1½" nominal steel pipe. In trim is 5', **max-out trim is 31'-6"**. Email [Production Manager](#) for current Lineset Schedule and details.

Single-Purchase rope system. First electric has a dedicated automated winch. Operator rail is located stage right at stage level. Loading gallery stage right, 26'-6" above stage floor. Accessed by enclosed ladder or loading dock door.

Available Weight: 700 x 35lb. bricks.

## Crossover

24" wide and lit, upstage of dead-hung full-stage black drape.

## Stage Manager's Console

Backstage right near loading dock elevator and green room/dressing rooms. Audio monitor and production comm are available. Page mic available. Communication with House Manager via two-way radios.

## Shop Area

None. We stock only the most basic assortment of tools for repairs or adjustments to scenic elements. The closest substantial hardware/materials resource is Home Depot located 4 miles away. Specialized theatrical rentals, equipment and supplies are only available by mail-order.

## Additional Equipment

- 36' Genie™ Personnel Lift
- 18' Scaffold unit
- Pallet Jack
- A-Frame and extension ladders, various heights

## House Draperies

Main Curtain: Reddish-brown with gold trim. On traveler track at plaster line. Manually operated stage right.

- Borders: Six (6). Flat, black velour. 8' H x 70' W.
- Legs: Two (2) sets of two. Flat, black velour. 25'-9" H x 16'-6" W.
- Full-Stage Travelers (used as legs 2 and 4): Two (2). Pleated, black velour. 26' H.
- Black Scrim with bottom chain. 30' H x 60' W.
- White Cyclorama, seamless muslin with bottom pipe. 28'-6" H x 68' W.
- White Leno Bounce. (Old cyc. Has tears and cannot be used as primary cyc.)

# Projection, Film, and Streaming

## Projector and Surface

- Panasonic PT-DZ870-ULK 8,500 lumen WUXGA DLP projector mounted on balcony rail
- 14' 6" x 25' Front Projection Screen (16:9)
- Analog Way PLS-200 Switcher

## Film

- Blu-ray Player – Panasonic DP-UB9000
- Digital file playback available via USB flash drive or USB hard drive, inquire for detailed specs and delivery options

## Video Capture and Streaming

Venue has a professional-grade recording and streaming setup available, capable of capturing and recording a live-mixed performance. Isolated recordings from each camera not possible. Limited video editing services may be available for an additional charge, inquire with [Production Manager](#).

- (3) Sony BRC-H800 Cameras
- (1) PTZ camera controller RM-IP500
- (2) Marshall CV355-10X 2.1MP compact camera
- (1) Marshall CV Pan/Tilt head
- (1) Marshall Multi-camera controller with mini joystick controller
- (1) Blackmagic Micro Studio Camera w/ Panasonic 14-70mm lens
- (1) Black Magic Design ATEM Television Studio Pro HD switcher
- (2) Black Magic Hyperdeck Studio Mini record/playback deck
- (1) 27" Dell Ultrasharp monitor
- (1) Blackmagic Smartview Duo 4k
- (1) Blackmagic Video Assist 4k
- (1) Cisco SG 350-28P Network switch connected to dedicated 30mbps up Comcast line
- (1) Dell Laptop with OBS, ATEM control, and ProPresenter
- (1) Decimator MD-HX video standards converter
- (1) Blackmagic Design UpDownCross Converter HD
- (1) Blackmagic Design SDI to HDMI 6G

## Notes

- ProPresenter cannot be operated at same time as OBS. Hardware encoder rental may be possible, coordinate with Production Manager if your production requires significant graphics management.
- If streaming, house laptop is not available for video playback or slideshow operation.
- Venue highly recommends that guests bring own playback computer/device for video, audio, or presentations. Venue will virus scan all files from guests and reserves the right to refuse to load guest files onto venue devices.
- Qlab not available on venue devices, must be provided by guest.
- Guest projector can be placed in the tech booth on built-in counter. Shoots through glass. No 220V power available, only US standard 120V.

# Lighting

Please email [Production Manager](#) for a link to current Vectorworks and PDF Rep Plot. Some drawings at end of this document for [reference](#).

## Company Switch

Lighting and motor power Stage Right: 120/208V, 3 phase, 400A/ leg.  
House lighting power on SR Platform: 120/208V, 3 Phase, 400A/leg  
Audio power Stage Left: 120/208V, 3 phase, 100A/leg.

## Dimmers

380 ETC Sensor, 2.4 kW.

## Console

Located in Control Booth at rear of the house. Can be moved to tech table for programming but must be in booth for performances per house policy. Multiple DMX network inputs and outputs located around the theater.

- ETC Ion 3000 with 2x20 playback wing

## Houselights

Operated from preset stations at Control Booth and Stage Manager's Console or programmable at light board via dimmers. House manager can take emergency control of the house lights via a key switch in both the upper and lower lobbies.

## Circuits

20A, dimmer per circuit, 380 total.

## Repertory Lighting Instruments by Position

Focus access by Genie lift overstage, ladders to balcony and box boom positions, and tension grid to catwalks.

### Onstage Moving Lights:

8 Clay Paky A.leda B-EYE K10  
12 Martin Mac Quantum

### Deck Moving Lights:

6 Martin Mac 250 Entour

### Onstage Electrics:

25 Source Four 26°  
24 Source Four 36°  
3 Source Four 50°  
32 Source Four PAR WFL  
6 Source Four PAR WFL as audience blinders  
10 Elation Fuze PAR Z125  
10 3-Cell Altman Sky Cyc  
8 6-Cell Altman Ground Cyc

Upstage PAR Truss – 12" x 18" truss pre-rigged with:

- 10 Elation Fuze PAR Z125
- 10 Vari-Lite VL500

Balcony Rail:

- 2 Martin Mac Quantum
- 8 Source Four Zoom 15°-30°
- 1 Source Four 10°
- 3 Source Four 19°

Catwalks:

- 48 Source Four 19°
- 2 Source Four 26°
- 2 Source Four Zoom Jr. 25°-50° as curtain warmers

Box Booms:

- 20 Source Four Zoom 15°-30°

Dance Towers:

- 48 Source Four 36° on eight, 6'-6" tall, pre-rig towers (Use same circuits as 60K Truss)

## Additional Instruments

- 48 ETC Source Four 575W Ellipsoidal Spot Lights
  - 5 10° barrels
  - 18 19° barrels
  - 42 26° barrels
  - 16 36° barrels
  - 21 50° barrels

Note: there are more barrels than instruments

- 2 Source Four Jr. Zooms 25°-50°
- 25 Source Four PAR
- 12 Source Four PARnels
- 22 Altman 6" Fresnels

## Followspots

Located center, above Control Booth position behind glass. All three positions have audio monitor and comm stations.

- 3 Lycian Starklite II 1200W. 7" color cuts. With Telrads and comm.

## Lighting Accessories:

- 2 Rosco RevoPRO Dual Gobo Rotators
- 2 High End Systems Data Flash strobe lights
- 1 Le Maitre MVS water-based Hazer & Fan
- 8 10' x 1½" boom pipes with 50 lb. bases

Various:

- A and B size Pattern Holders, steel and glass
- 7.5" Barn Door
- 10" Barn Door
- 5" Top Hat (6.25" frame)
- Source Four Iris
- 6.25" Donut
- 7.5" Donut

## Notes

All instruments and circuits are wired for Stage Pin (2P&G). Adaptors and a variety of stage pin and DMX cable available. All instruments have gel frames and safety cables.

## Audio

VPAC has a strictly enforced DB limit of 92dB LAeq 10. VPAC has worked to build a trust in the market as it pertains to this issue in our venue, and will not compromise our integrity to the patrons and the community, which loud shows have done in the past. VPAC provides SPL monitoring equipment at the FOH mix position as well as staff trained in its use. Our equipment measures a 10-minute average allowing for the natural fluctuation of a performance. A drum shield and amplifier baffles are available as needed. If sound levels are too high at sound check, or if the band is not executing a full sound check, a drum shield and amplifier baffles are required.

## Paging System

Volume-controlled program monitor/paging speakers at: lighting and sound positions in the booth, dressing rooms, green room, stage manager console, and followspot booth. Paging mic at Stage Manager's Console, stage right.

## Production Communications

Clear-Com. One channel party line.

- Wired Stations: Control Booth lighting side (1), Control Booth audio side (1), Stage Right, Stage Left, Main Curtain, Followspots (3), Tension Grid, US wall onstage (2).
  - Additional locations may be available with advance notice
- Wireless: HME headsets (4).

## Mix Positions

FOH at rear of orchestra seating, 55 feet from stage, just house left of center with unobstructed sightlines to the stage and both PA hangs. House console can be lowered via hydraulic lift for a guest console to be placed on top. Guest snake ties guest consoles into house snake. *Please note the mix position may not be moved into the house due to local egress laws, the limited size of the house, equipment restrictions, and the aesthetics policy of the VPAC.*

Monitor mix position is stage left.

## Mixing Consoles

- Front of House: Digico SD-12 with Waves SG Live Bundle [Board specifications](#). Note: Phantom is FOH only.
- Monitor Mix: Digico SD-9 V2 [Board specifications](#).

## Audio Snake

- Radial 56 x 8, dual A/B Jensen isolated split downstage left.
- Digico SD Rack downstage left with Optocore fiberoptic snake run to FOH mix position
- (2) Digico D Rack with madi snake for monitor mix position



## House PA

*Brand new for the winter 2022/23 season*

(24) L'Acoustics Kara II - Main PA

(8) L'Acoustics SB18 - Subs

(6) L'Acoustics 5XT – Front Fill

(6) L'Acoustics X8 – Dance Pit Fill

All amplification is provided by L'Acoustics LA4X and LA2Xi amplified controllers.

System processing is handled by (1) L'Acoustics P1 System Processor located at FoH. 16 band parametric EQ, Gain and Delay are available on each output.

Kara II mains are in a stereo configuration. Subs are flown directly below main array in a 3 front 1 back cardioid arrangement. 5XT front fills are always deployed. When venue is configured to include a dance pit, additional X8 fills are deployed in addition. Both the X5T and X8 fills are driven by the same signal from the console.

PA is driven from FoH and can be driven from stage upon request. System is configured for Left, Right, Sub, Fill drive from console. Can be configured to run full range if requested by engineer. Available input drive formats are Analog, AES or, Milan AVB. When driven from stage, input drive format is limited to Analog or AES.

### Front Fill Speakers

6 Meyer UPM-1P Front Fills

### Monitor Speakers/IEM

12 Meyer UM-1P 12" narrow-coverage powered monitors  
2 Meyer UM-100P 12" wide-coverage powered monitors  
2 Meyer UMP-1P 15" powered monitors  
1 Dual 15" EAW passive drum subwoofer  
4 JF80 permanently mounted FOH/over stage for fold back  
Crown Macro Tech  
4 Sennheiser EK300 stereo IEM  
4 Sennheiser G4 stereo IEM  
1 Shure P4HW wired IEM

### Microphones

3	Neumann KMS 105	1	Shure Beta 91
1	Telefunken M81	4	KSM32 Studio Condenser
1	Telefunken M81-SH	1	Audio Technica AT871R
8	Shure SM-57		condenser
2	Shure Beta 57A	4	Shure Beta98D/S
9	Shure SM-58 (2 switched)	2	Shure Beta52a
3	Sure Beta 58A	1	Shure Beta 56a
6	Shure Beta 87C	1	Audix d6
2	Shure Beta 87A	3	Sennheiser e604

2	Sennheiser e609	2	AKG-C3000
2	Shure SM-81	4	DPA 4099 plus various mounts
4	AKG-C535EB	1	AKG-D112
2	AKG-C747 comb	2	AKG-C418
4	AKG-CK91 (se300b)	7	Sennheiser-MD421 II
5	AKG 10" CK98 shotguns (used w/se300b)	3	Shure SM-91
3	Neumann KMR-82i Shotguns	3	Crown PCC 160 floor mic
2	AKG-C414 B-ULS	7	AT853 Uni-point hanging mics
		1	Beyer M88

## DI

8	Countryman Type 85 FET Active
4	Radial Pro DI Passive
2	Radial J48 Active
1	Radial J48 Stereo Active
1	Radial JPC Stereo Active
2	Radial Pro D2 Stereo Passive

## Wireless Microphones

12	Lectrosonics Venue receivers
12	Lectrosonics LM-400 belt pack transmitters w/ E6 & B6 microphones
12	Lectrosonics handheld transmitters with Lectrosonics HHC capsules
2	Lectrosonics plug-on transmitters with phantom power
4	Shure SM 58 microphone capsules
6	Shure Beta 87c microphone capsules

## Signal Processors

1	Digico 4REA4 located FOH for Main L+R, Sub and Front Fill processing as well as signal distribution throughout the theater
1	Avalon VT747sp Tube Compressors

## Playback

2	Tascam Compact Disc Players: CD-500
1	1/8" Auxillary input FOH

## Mic Stands

2	Tall straight, solid triangular base	2	Kick drum/guitar amp mic stand
7	Tall boom, round base	1	Kick drum/guitar amp base only
6	Tall straight, round base	3	10" round stand bases
1	Tall straight, solid triangular base	3	12" solid triangular stand bases
1	Short boom, round base	3	Tabletop 6" round bases
11	Tall boom	3	Choral mounts w/c-clamp
12	Short boom		

## Notes

All lengths of cable available for a variety of stage layouts. No instrument cables available. Various mic clips available. Guitar stands available. Venue does not carry horn clips.

# Props

## Pianos

- 9' Steinway D Concert Grand (Mainstage)
- Steinway Studio Upright (Green Room)
- VPAC's May Gallery patron lounge often has a sponsored baby grand piano for the winter season. Contact Production Manager to find out if a piano is in the May Gallery and what type it is.

## Orchestra Shell

5 20' tower sections, natural pine.

## Chairs & Music Stands

30 Wenger black cushioned orchestra chairs  
4 ea. Black and Natural Wood Stools (no back)  
2 Adjustable height, low-back cello/bass stools  
40 Black Manhasset stands  
1 Conductor's stand  
40 40W Clip Lights

## Platforms

Wenger Versalite 3000 and 5000 Platform series with skirting and chair rails. Various Triangle/Trapezoidal additions for semi-circle arrangements.

10 8' x 4' sections  
47 8" legs  
75 16" legs  
52 24" legs  
2 Wenger Stair Sections with handrails (not available if pit is in dance configuration)  
2 Custom built free standing stair units for 24" risers  
2 Custom built free standing stair units for 16" risers  
1 Wenger Double Conductors Podium.

## Dance Floor

- Harlequin Cascade 32' x 52', must run SL↔SR
- Harlequin Black/Grey Reversible 33' x 49', must run SL↔SR
- 5 Dance Barres

## Lecterns

- Light Wood Podium

## Green Room, Dressing Rooms, Wardrobe

Green Room – located at stage level

26'-6" x 16' room with sink, lounge area, and rehearsal piano. The Green Room is adjacent to the dressing rooms and is 15' from stage right wings. There is a video monitor with audio feed of stage.

Dressing Rooms – located at stage level

- Chorus Room: 18'-3 x 11'-10", 9 mirror spaces.
- Chorus Room: 11'-4 x 11'-3", 9 mirror spaces.
- Star Room: 10'-5" x 8'-4", 2 mirror spaces.
- Star Room: 11'-2" x 9'-2", 3 mirror spaces.

All dressing rooms are on stage level. The farthest star dressing room is 74' from backstage. All include tables, mirrors, make-up lighting, clothes racks, a sink, toilet, shower, and towels. The two larger dressing rooms are equipped with handicap-accessible restrooms/showers.

Wardrobe Facilities – no dedicated space, share with kitchen or use available dressing room area.

- Frigidaire Heavy Duty Extra Capacity Washer and Dryer on site
- Iron and Ironing Board (1)
- Steamer (2)
- Rolling clothes rack, 5' tall x 4' long x 20" wide (6)

*\*No same-day dry cleaning services available in town. None. At all.*

## Appendix A: Emergency & Medical Information

### **ALL EMERGENCIES DIAL 911**

Beaver Creek Security: (970) 949-4911 Headquartered in gatehouse at base of resort  
Avon Fire Department: (970) 748-4050 (non-emergency)  
Eagle County Sheriff: (970) 748-4040 (non-emergency)

### Medical Services

Alpine Mobile Physicians – Open 24/7

On-call services

(970) 376-8376

Avon Urgent Care – Open 8 am – 8 pm, 7 days a week

50 Buck Creek Rd, Suite 100, Avon

(970)949-6100

Avon Chiropractic Life Center

150 E. Beaver Creek Blvd, #106-B, Avon

(970) 949-0444

Mountain Dental, Dr. David Wilson

82 E. Beaver Creek Blvd, #211, Avon

(970) 949-4433

Hyperbaric Oxygen Therapy – Open 8 am – 6 pm, M-F and by special appointment

Vail Integrative Medical

0105 Edwards Village Center, A203, Edwards

(970)926-4600

[link to more info](#)

## Appendix B: Local Services

### For Hire Transportation

#### **Dial-A-Ride**

On request free bus service within Beaver Creek resort only  
(970) 949-1938

#### **High Mountain Taxi**

Fares from Aspen to East Vail  
(970) 476-8294

#### **Epic Mountain Express**

##### **Airport Service**

Shared rides or premier point-to-point service  
(970) 754-7433  
<https://www.epicmountainexpress.com/>

### Massage & Gym

#### **Allegria Spa**

Located in the Park Hyatt Beaver Creek, 2 blocks from theater  
(970) 748-7500  
[www.allegriaspa.com](http://www.allegriaspa.com)

\*Therapists for on-site sessions available on request

### Groceries & Pharmacies

#### **City Market & Pharmacy**

72 Beaver Creek Place, Avon  
(970) 949-5409

#### **Beaver Creek Market & Deli**

In Beaver Creek, 20 yards from theater  
(970) 949-0742

#### **Walmart & Pharmacy**

255 West Main Street, Avon  
(860) 409-0404

#### **Walgreens & Pharmacy**

15 Sun Road, Avon  
(970)949-4057

### Laundry

Theater is equipped with a household size stackable washer & dryer.

\*Avon/Edwards area has a few dry cleaners, but no same-day dry cleaning services are available in our area.

### Post Office

#### **Avon Post Office**

111 W Beaver Creek Blvd, Avon  
(970) 949-4057

## Appendix C: High Altitude Information

The VPAC maintains two oxygen bottles with masks for backstage use which must be supervised by authorized personnel.

### **High Altitude Health Tips**

*From the Beaver Creek Medical Center*

In the Vail/Beaver Creek area, there is 30% less oxygen and 50% less humidity than at sea level. Everyone is affected to some degree and the symptoms range from restlessness and shortness of breath, to coughing, to increased heart rate and headaches. Although it can be serious, it's easily avoidable.



### **What you can do:**

**Go easy!** When you arrive in the mountains, it usually takes a day or two for your body to adjust. Don't overexert. Effects of exercise are more intense here. If you normally run 10 miles a day at home, you might try 6 miles here.

**Hydrate!** Drinking plenty of water is the number one way to help your body adjust easily to our higher altitude. The decreased humidity, along with the decreased oxygen makes dehydration a common health problem. You breathe faster, which causes the body to lose moisture more quickly. You'll need 40-50% more fluids per day than you would at sea level.

**Monitor your alcohol intake!** In our rarified air, golf balls go ten percent farther... and so do cocktails. Alcoholic drinks pack more of a wallop than at sea level. It is recommended that you go easy on the alcohol in the mountains, as its effects will feel stronger here.

**Eat foods high in potassium!** Foods such as broccoli, bananas, avocado, cantaloupe, celery, greens, bran, chocolate, granola, dates, dried fruit, potatoes and tomatoes will help you replenish electrolytes by balancing salt intake.

**Plan for sun!** We receive over 300 days of sunshine each year (more than San Diego or Miami). With less water vapor in the air at this altitude, the sky really is bluer in Colorado. But there's 25 percent less protection from the sun. You can get seriously burned in as little as 20 minutes if you're not using proper protection. Use sunglasses, sunscreen, and lip balm, even in winter.

### **Other High Altitude Issues:**

**Frostbite.** The best cure is prevention but if you experience frostbite do not rub it. Slowly warm the affected area in lukewarm water. Call a physician, especially if the frostbite has affected a large area.

**Nosebleeds.** Increased activity and low humidity dry membranes in the nose, which may cause bleeding. You can prevent it by putting a touch of Vaseline in your nostrils each morning and night, and maintaining an increased fluid intake.

## Appendix D: Hypobaric Chamber Information



*Relief, Recovery, Rehabilitation – Results*  
*vailhealth.com*

*VIMG is happy to announce an exciting new service for our patients and guests, hyperbaric oxygen therapy.*

### *What is Hyperbaric Oxygen Therapy (HBOT)*

Simply put, HBOT is a non-invasive therapeutic treatment that delivers oxygen to cells in the body. All living creatures require air, water, and food, and nothing is more vital than oxygen. It is possible to last weeks without food, a few days without water but only mere minutes without oxygen. HBOT involves breathing oxygen in a pressurized chamber in which the atmospheric pressure is raised up to three times higher than normal. Under these conditions, your lungs can gather up to three times more oxygen than would be possible breathing oxygen at normal air pressure. The body's tissues need an adequate supply of oxygen to function and when tissue is injured, it may require more oxygen to heal. "Hyperbaric oxygen therapy increases the amount of oxygen dissolved in your blood," says Nayan Patel a biomedical engineer in FDA's Anesthesiology Devices Branch. An increase in blood oxygen may improve oxygen delivery for vital tissue function to help fight infection or minimize injury.

Hyperbaric chambers, used in HBOT are any number of enclosures, which can be pressurized to allow a person inside to experience higher atmospheric pressures than the normal environmental pressures. For example, a treatment at an elevation of 12,000 feet above sea level using a 4 psi (1.27 ATA) can simulate a descent of ~5,843 feet to 6,157 feet above sea level. At higher elevations, the barometric pressure is lower. This decrease of pressure also decreases the oxygenation of blood, and is known as anoxia—where molecules of oxygen exert less pressure on the walls of the alveoli (Dalton's Law). HBOT follows this law.

How does Hyperbaric Oxygen Therapy (HBOT) work?

Hyperbaria - Increased atmospheric pressure as a means of increasing oxygen uptake without an enriched oxygen source

Hyperoxia - Increased total oxygen content

Hyperbaria is based on the concept of the relationship of gas pressure and uptake in liquids (blood, plasma and tissues). Henry's Law states that "a gas is dissolved by a liquid in direct proportion to its partial pressure." For example, at sea level, atmospheric pressure is 760 mm Hg, the oxygen concentration is 21% and the body's oxygen content or partial pressure,  $pO_2$ , in blood and plasma is ~ 40 mm Hg.

Red blood cells have a limitation as to how much oxygen can bind with hemoglobin. The plasma portion of the blood typically has about a 3% oxygen concentration. By placing someone in a 3 psi pressure hyperbaric environment, the increase in atmospheric pressure at sea level goes from 760 mm Hg to 915 mm Hg. This increase in gas pressure, increases the partial pressure of the oxygen

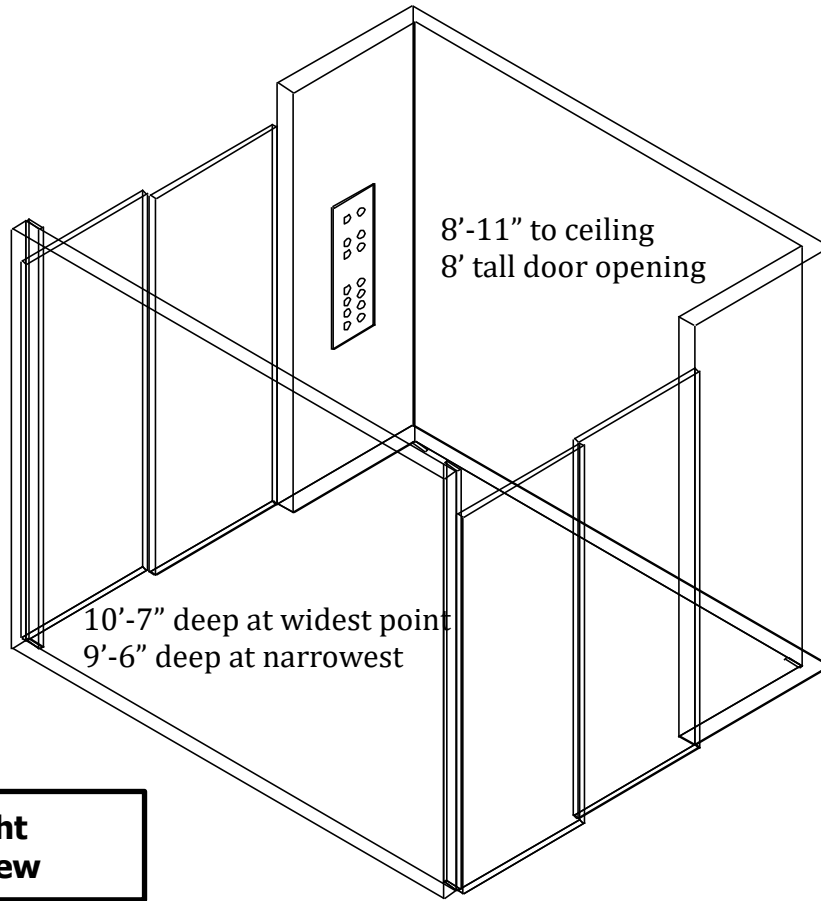


gas and thus forces more oxygen to be dissolved in the plasma. This saturation of oxygen in the blood that occurs due to the HBOT therapy, allows the extra oxygen to be diffused or transported to the surrounding body tissues. Thus, oxygen transport by plasma is significantly increased under this specialized treatment. At three atmospheres pressure, enough oxygen can be dissolved in the plasma to support the oxygen demands of the body at rest in the absence of hemoglobin!

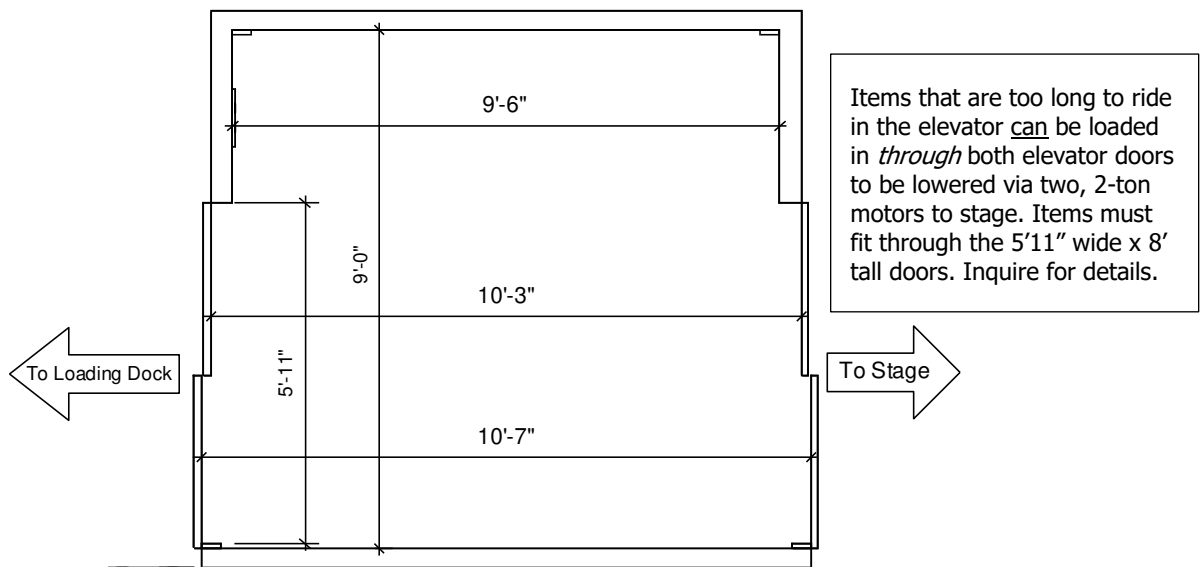
The FDA and Medicare have approved the use of Hyperbaric Oxygen Therapy for 13 conditions such as diabetic and other wound healing, anemia and compartment syndrome to name a few. In addition, current research shows that HBOT is a viable treatment for the growing list of "off-label" conditions. These include various disorders from brain injury, peripheral nerve issues, stroke and sports injuries to name a few. Of these 'off label' indications, there is growing research on the effectiveness of HBOT although they are not yet formally approved by the FDA. Hyperbaric chambers are medical devices that require FDA clearance. FDA clearance of a device for a specific use means FDA has reviewed valid scientific evidence supporting that use and determined that the device is at least as safe and effective as another legally U.S.-marketed device.

HBOT is very effective for acute mountain sickness. This is a common occurrence for guests to the Vail Valley when traveling from sea level. The initial symptoms of altitude sickness can include: Headache, lethargy, a drop in performance, lack of coordination, insomnia, appetite loss, dizziness, nausea and vomiting. A session in the hyperbaric chamber will simulate a decrease in altitude of approximately 7,000 feet.

# Freight Elevator Information

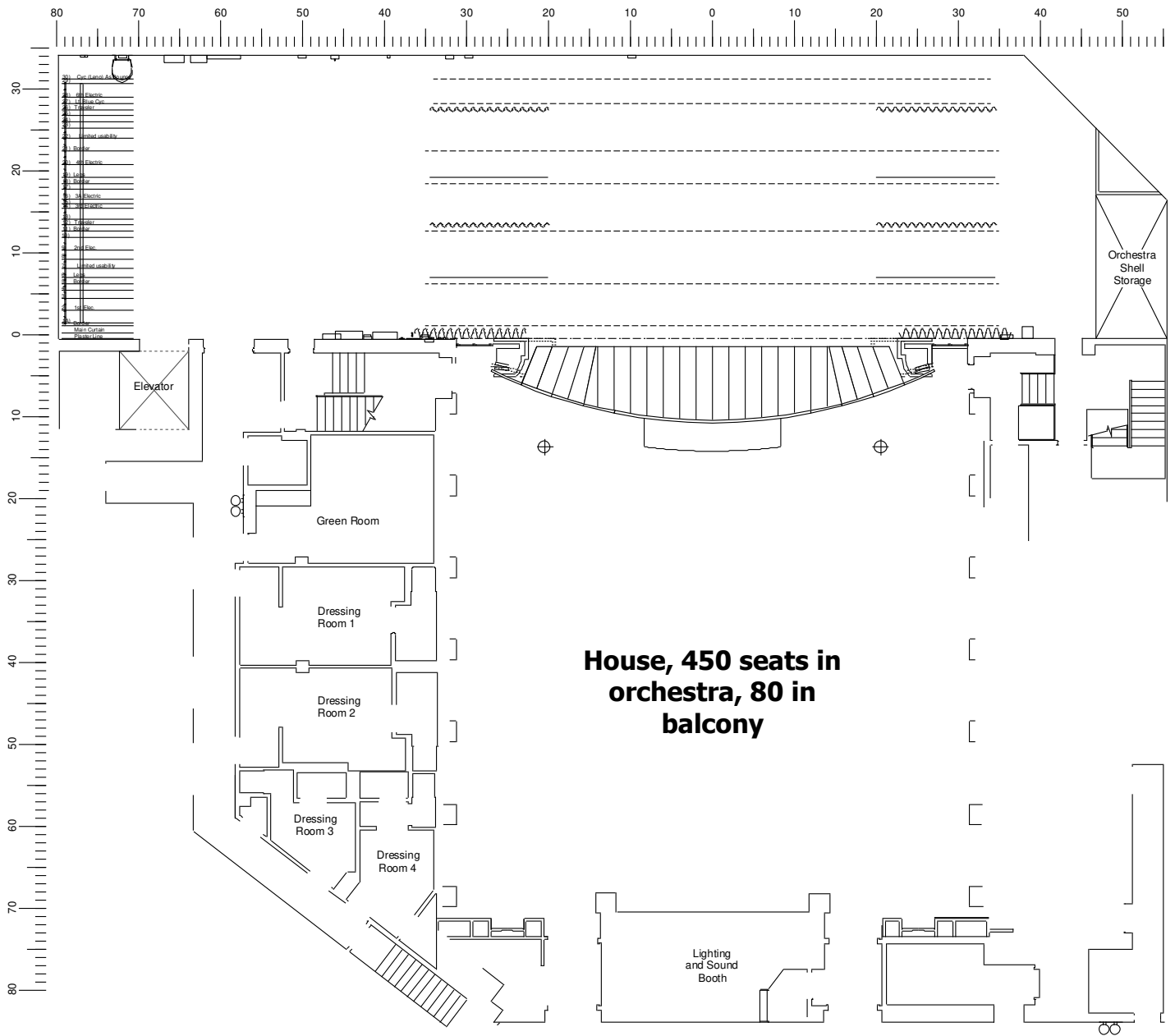


**Elevator Right Isometric View**



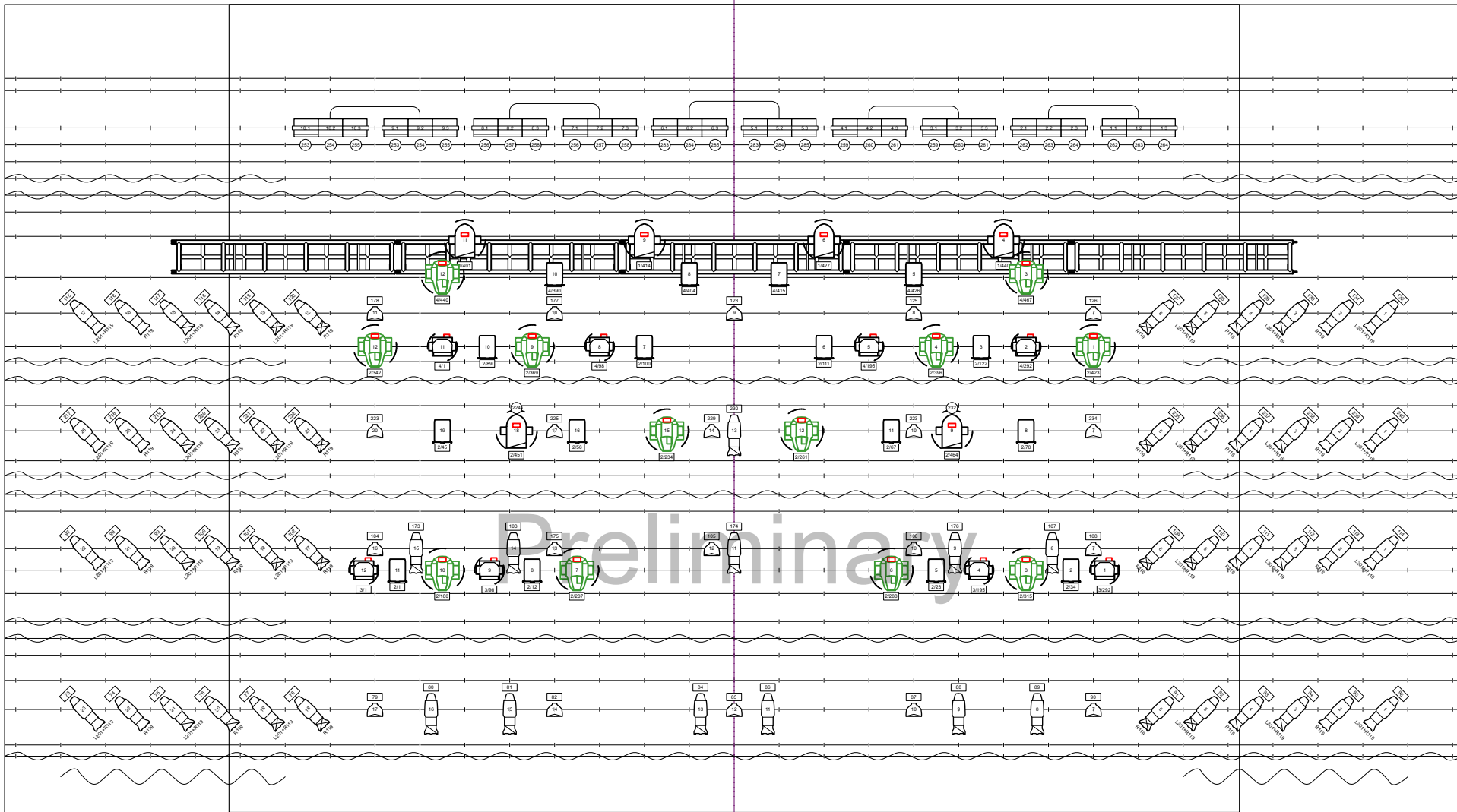
**Elevator Plan View**

# Theatre Plan View




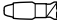
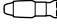


**Doors exit to Lower Lobby: merch, concessions, restrooms.  
Box Office/Street access are on upper level.**

**Theatre Plan View**




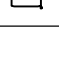


**Instrument Legend**

**Conventionals**

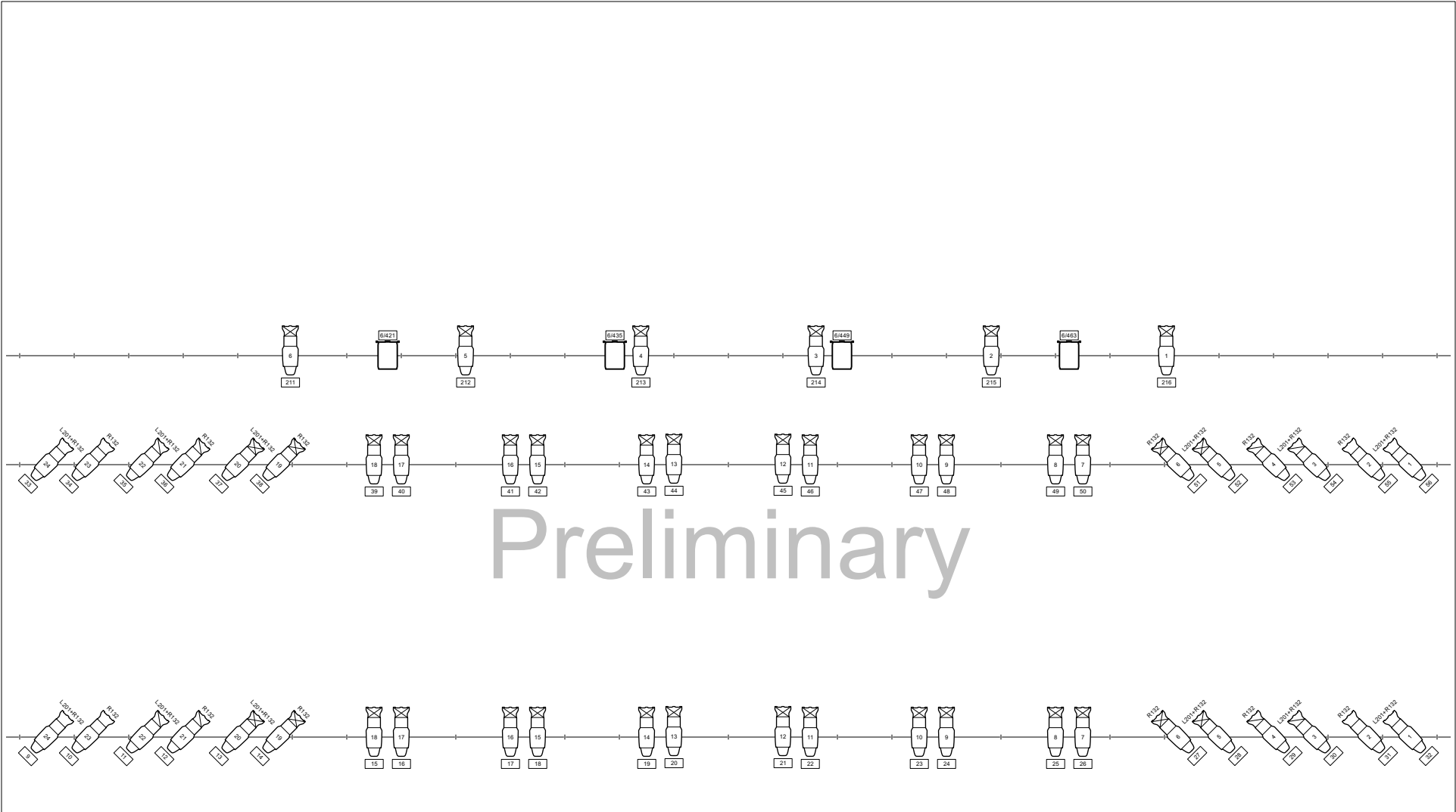
-  ETC Source4 19deg
-  ETC Source4 26deg
-  ETC Source4 36deg
-  ETC Source4 PAR WFL
-  Altman Sky Cyc 3 Cell

**Intellectuals**

-  Martin Mac Quantum Profile
-  Clay Paky ALEDA B-EYE K10
-  Varilite VL 550D
-  Elation Fuze Par Z175

**VPAC Lighting Plots**

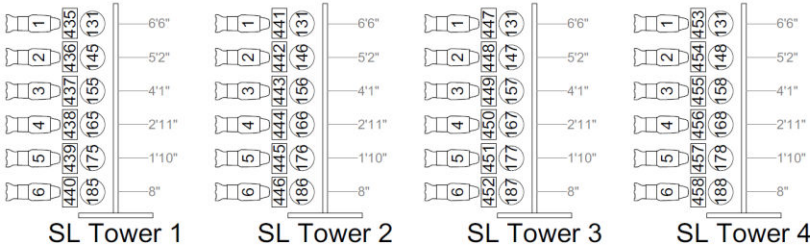
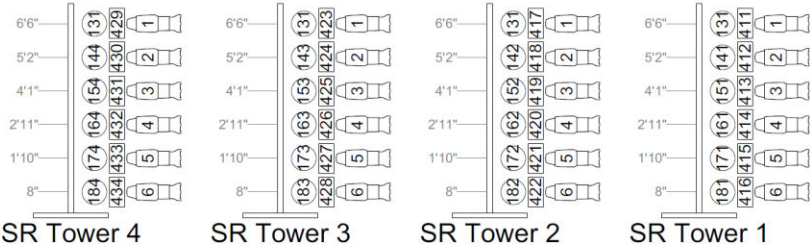
Overstage Test	Date : 1/17/23
Vilar Performing Arts Center	Scale : 1:75
Drawn By :Cheyenne Mendoza	<b>Sht-2</b> OF 2



Preliminary

<b>VPAC Lighting Plots</b>	
FoH Test	Date : 1/17/23
Vilar Performing Arts Center	Scale : 1:64
Drawn By: Cheyenne Mendoza	<b>Sht-1</b> OF <b>2</b>

# Repertory Plot – Dance Towers



Guide to Instrumentation	
S4 19-deg	Mac 250 Entour (Ext)
S4 26-deg	B-EYE K10
S4 36-deg	Studio Spot 575
S4 50-deg	3-Cell Sky Cyc
S4 Zoom (15-30)	6-Cell Ground Cyc
S4 PAR-VNSP	Floor Plate
S4 PAR-NSP	
S4 PAR-MFL	
S4 PAR-WFL	
6" Fresnel	
PAR 64-NSP	

**Notes:**

All towers are pre-fabricated Tomcat Dance Towers.  
 Standard placement: (1) tower beneath each of (4) house electrics

Gray outlined fixtures are hung in the house plot, but not used for this show.

Legend	
Gobo/Frost Color	Unit Number
Unit Number	Channel
Dimmer	Unit Address
Channel	

**Vilar Performing Arts Center**  
*Rep Plot 2017*

Drawing Title: Dance Towers	
Drawn By: Josh Larson	Page: 1/1
Date: 2/15/17	
Rev. 3.0	Scale: 1/4" = 1'